

Designing a 360° immersive virtual reality tool for training in infusion set-up

V. LE BIGOT¹, A. BROS², F. NATIVEL³, T. ADNET⁴, D. CABELGUENNE⁵, F. LINDENBERG⁶, S. GENAY⁷, P. BESNIER⁸, S. RODIER⁹

1. Pharmacy Department, CHD Vendée, La Roche sur Yon, France; 2. Pharmacy Department, Hôpitaux Universitaires de Strasbourg, Strasbourg, France; 3. Nantes Université, Oniris, CHU Nantes, INSERM, Regenerative Medicine and Skeleton, RMeS, UMR1229, Nantes, France; 4. CH Jacques Monod, Le Havre, France; 5. CH Le Vinatier, Bron, France; 6. CHU de Nantes, Nantes, France; 7. Univ. Lille, CHU Lille, ULR 7365 - GRITA - Groupe de Recherche sur les formes Injectables et les Technologies Associées, F-59000 Lille, France; 8. Pharmacy Department, CHU de Caen, Caen, France; 9. CHU de Poitiers, Poitiers, France

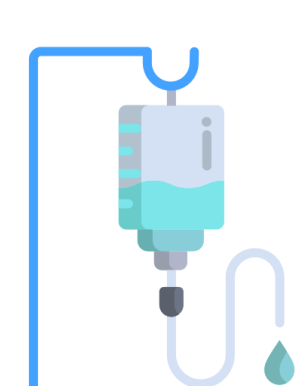
 victoire.lebigot@ght85.fr

What was done?



Creation of a **360° virtual reality digital tool**, using a **fun format** based on **learning through mistakes**. Specifically designed for **novice healthcare professionals** with a focus on **pharmaceutical teams**.

Why was it done?



Errors in infusion set-up are common and can have serious consequences on patient care, therefore **adhering to best practices is essential to reduce risks**.

Comprehensive training for healthcare professionals on both proper techniques and procedures, is crucial to ensure safe and effective infusion management.

A **digital navigating environment** is suitable for mobile use and **enhances interactivity** between the trainer and the learners.

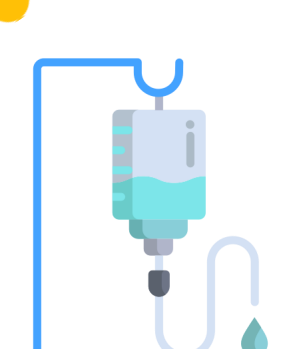
How was it done?



9 pharmacists
from 8 different hospitals



Simulation
expertise



Infusion management
expertise

Divided in 3 subgroups



Content creation (2)



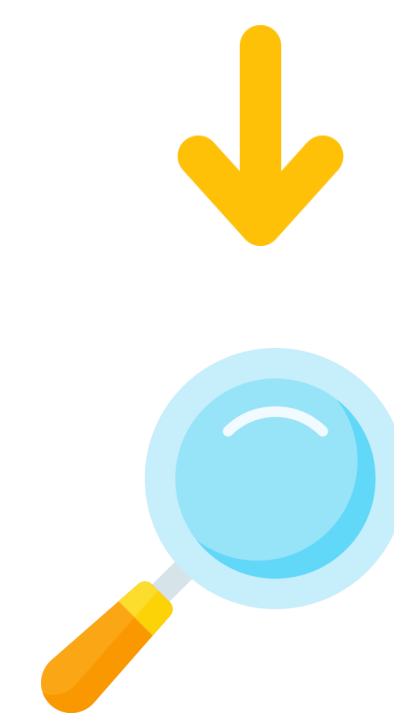
Reviewing (1)



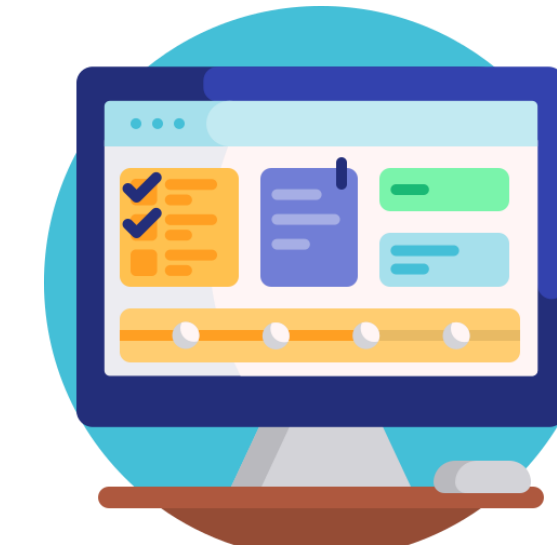
Guidelines from
Learned Societies



Creation of an
illustrated
presentation



Selection of the most
frequently infusion set-
up errors



Online Learning Management
System platform

What has been achieved?

Creation of a virtual pathway
designed in 3 different
environments



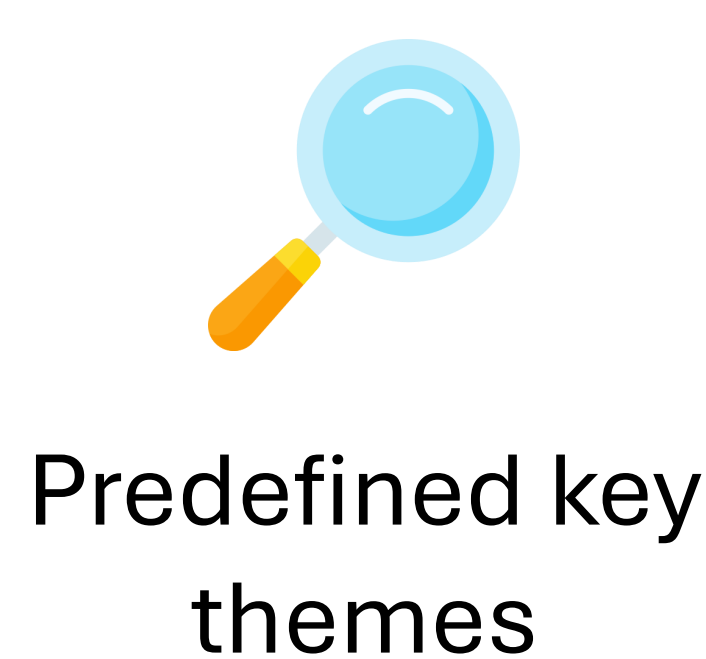
Operating
room



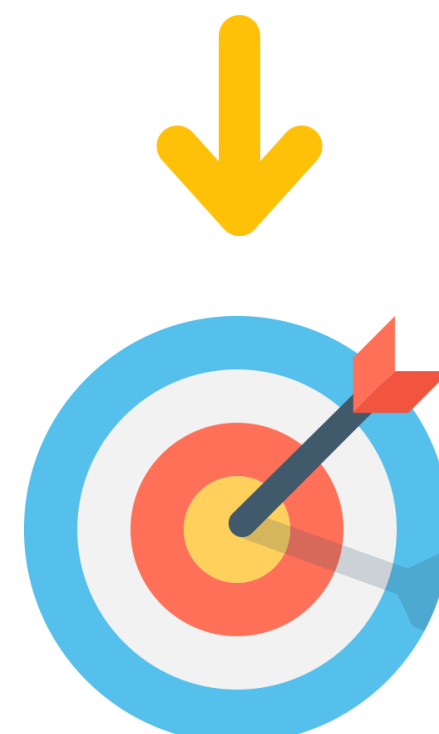
Post-
operative
recovery
room



Medical
care unit



Predefined key
themes



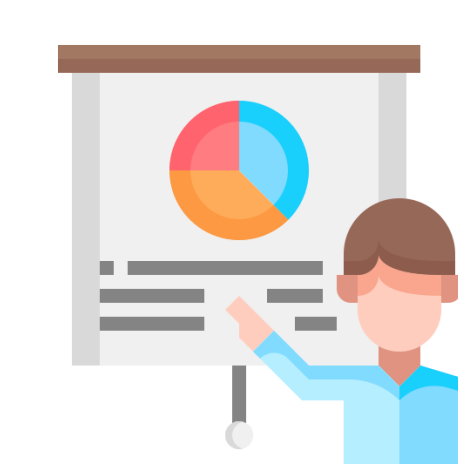
Clickable elements
were created as
Points of Interest
(POIs)



Creation of 12 POI

Each POI contains 3 Multiple
Choice Questions (MCQ)
Total of 25 MCQ

Each POI is illustrated with
photos or videos



An explanative slide is
provided after each
MCQ



What's next?



This training tool will be tested under real-life conditions at a national pharmacy congress. It will be **approved** by a panel of experts and learned societies, then **assessed** by trainers and learners, so that it can find its place in training programs for all healthcare professionals involved in infusion set-up management.

