



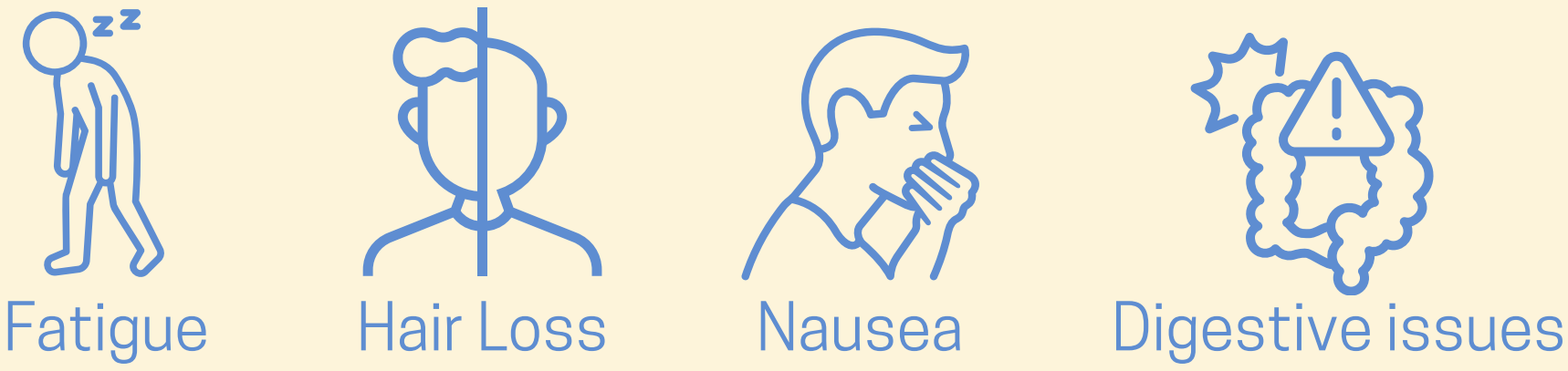
CPS50198

WHY WAS IT DONE ?

25% of new cancer cases diagnosed in France each year : **digestive cancers**

Medical management mainly relies on cytotoxic drugs

Side effects of these medications can affect negatively patients quality of life :



These symptoms can make daily life challenging

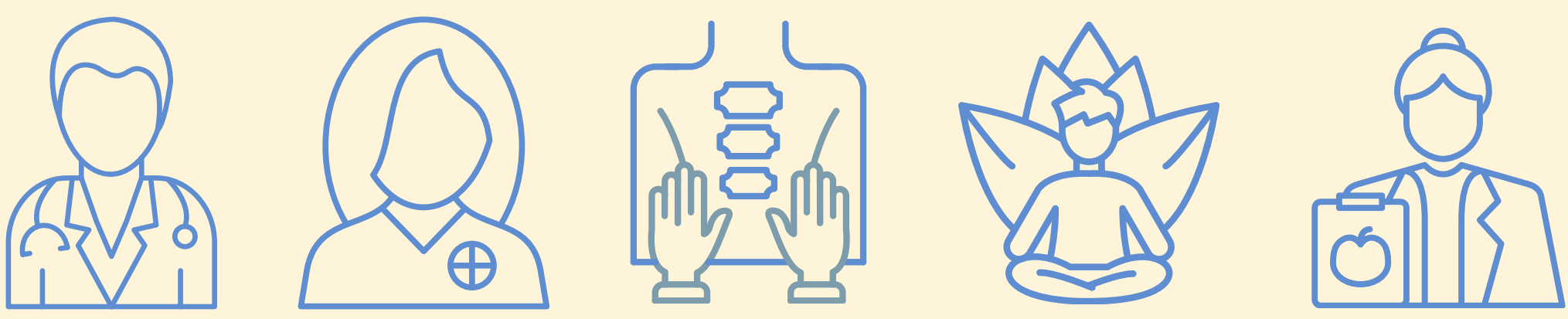
WHAT WAS DONE ?



As part of a patient therapeutic education program, the goal of our project was to **develop an innovative educational tool** to help patients better **understand these side effects** and find ways to **manage them**

HOW WAS IT DONE ?

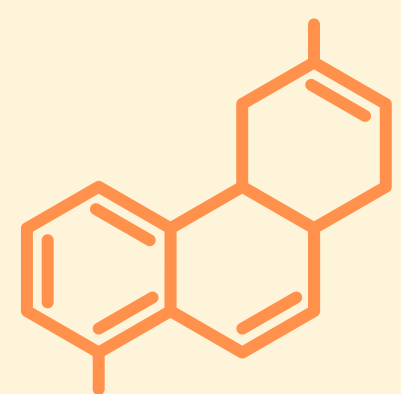
Multidisciplinary therapeutic education program bringing together



oncologists, pharmacists, osteopaths, sophrologists, nutritionists



Pharmacy responsible for a workshop focused on the side effects of chemotherapy



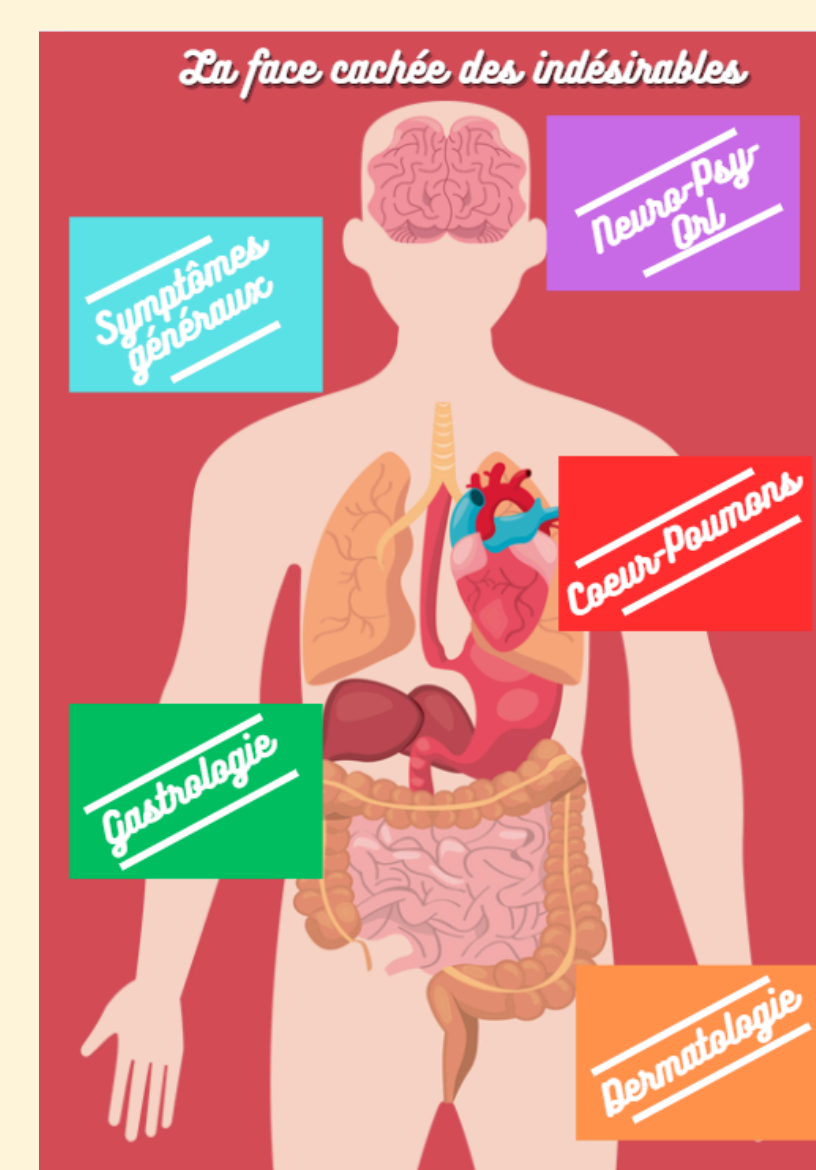
Main molecules used to treat digestive cancers were listed, along with their most common side effects.

Based on this analysis, **playing cards** were created, each corresponding to a specific side effect.

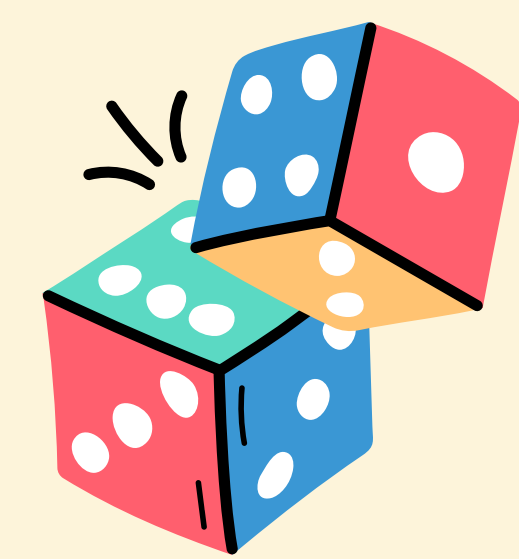
WHAT HAS BEEN ACHIEVED ?

Developed tool is an educational and interactive board game

1 board



1 dice



56 cards divided in 6 categories



Dermatology



Alopecie
Chute de poils, cheveux, barbe, cils
Racontez-nous !



Gastroenterology



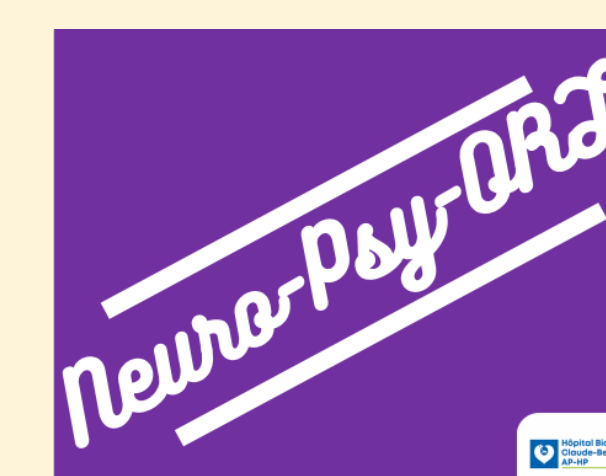
Nausée, vomissement
Racontez-nous !



General symptoms



Douleurs musculaires et articulaires
Racontez-nous !



Neurology-psychology-ENT



Vertiges
Racontez-nous !



Heart-lungs



Saignement du nez et des gencives
Racontez-nous !



Real life scenarios



Vous êtes pris de diarrhées après la prise de votre traitement.
Que faites-vous ?

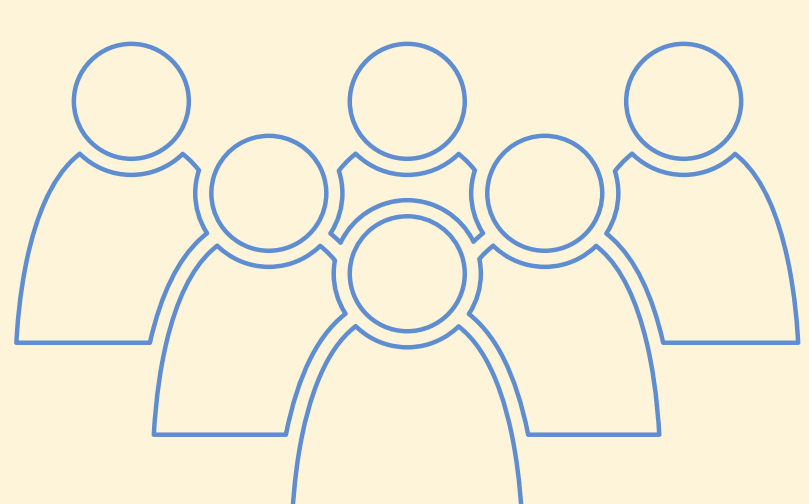
Cards were designed to be understandable and accessible to all patients.

The workshop takes place in **two parts**, with the pharmacist as the main facilitator :

In the first part, patients are encouraged to share their **personal experiences** related to the drawn card.

Then, the **scenario cards** are presented to help patients manage these challenges in their daily lives.

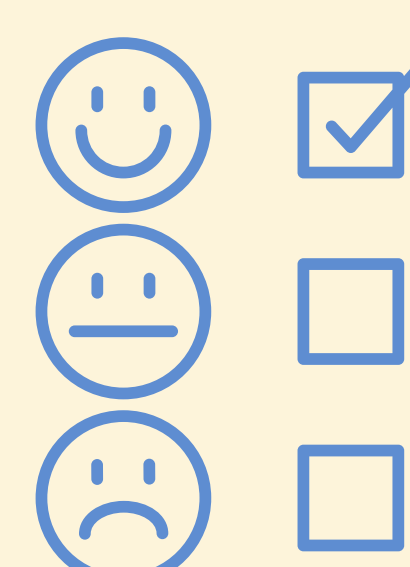
WHAT NEXT ?



The decision was made to limit the number of **participants to 6**, in order to allow everyone to express themselves and exchange freely



Duration of the workshop was theoretically set at **1.5 hours** but will need to be adjusted during the first workshops



It will be necessary to implement satisfaction surveys and patient follow-up on various criteria:

- emergency room visits
- number of calls after the session
- rating of side effects