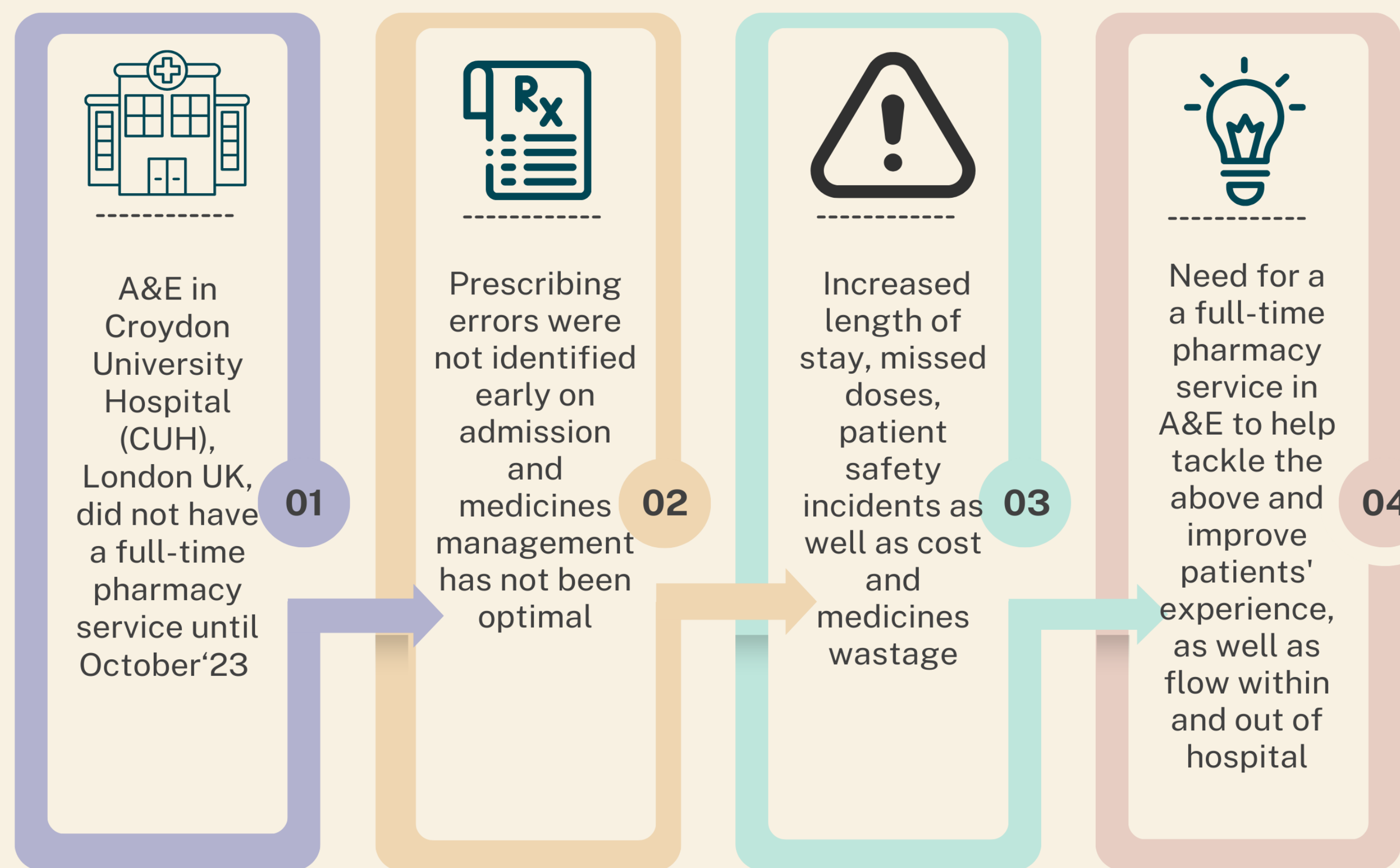


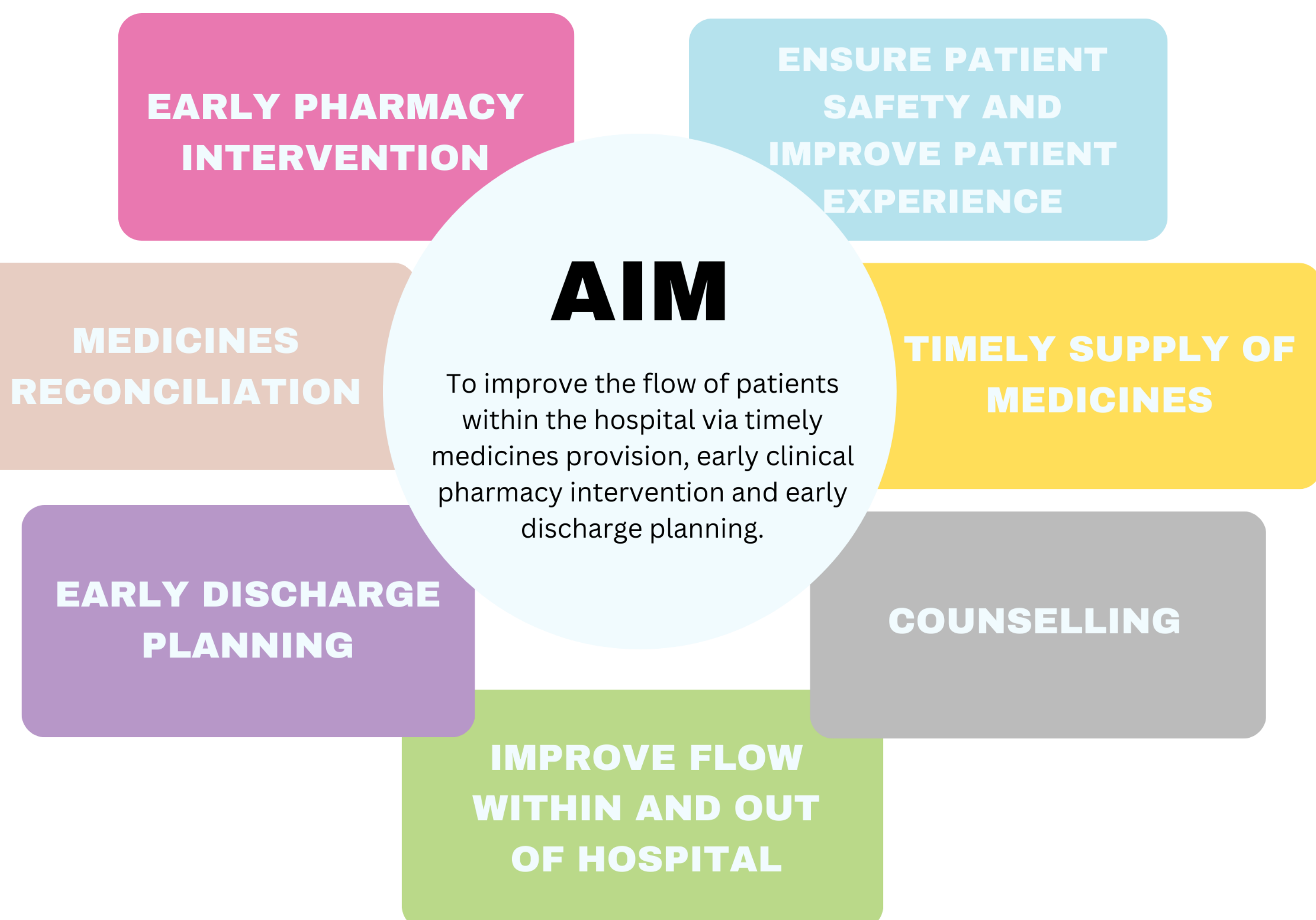
# To improve timely medicines provision, support safe prescribing and early discharge planning to improve flow within an NHS Trust; service design and implementation.

Christina Anastasiadou – Lead Pharmacist Acute & Emergency Medicine  
 Karen Dicks - Chief Pharmacy Technician Medicines Management  
 Radhika Patel - Pharmacy Technician MMS

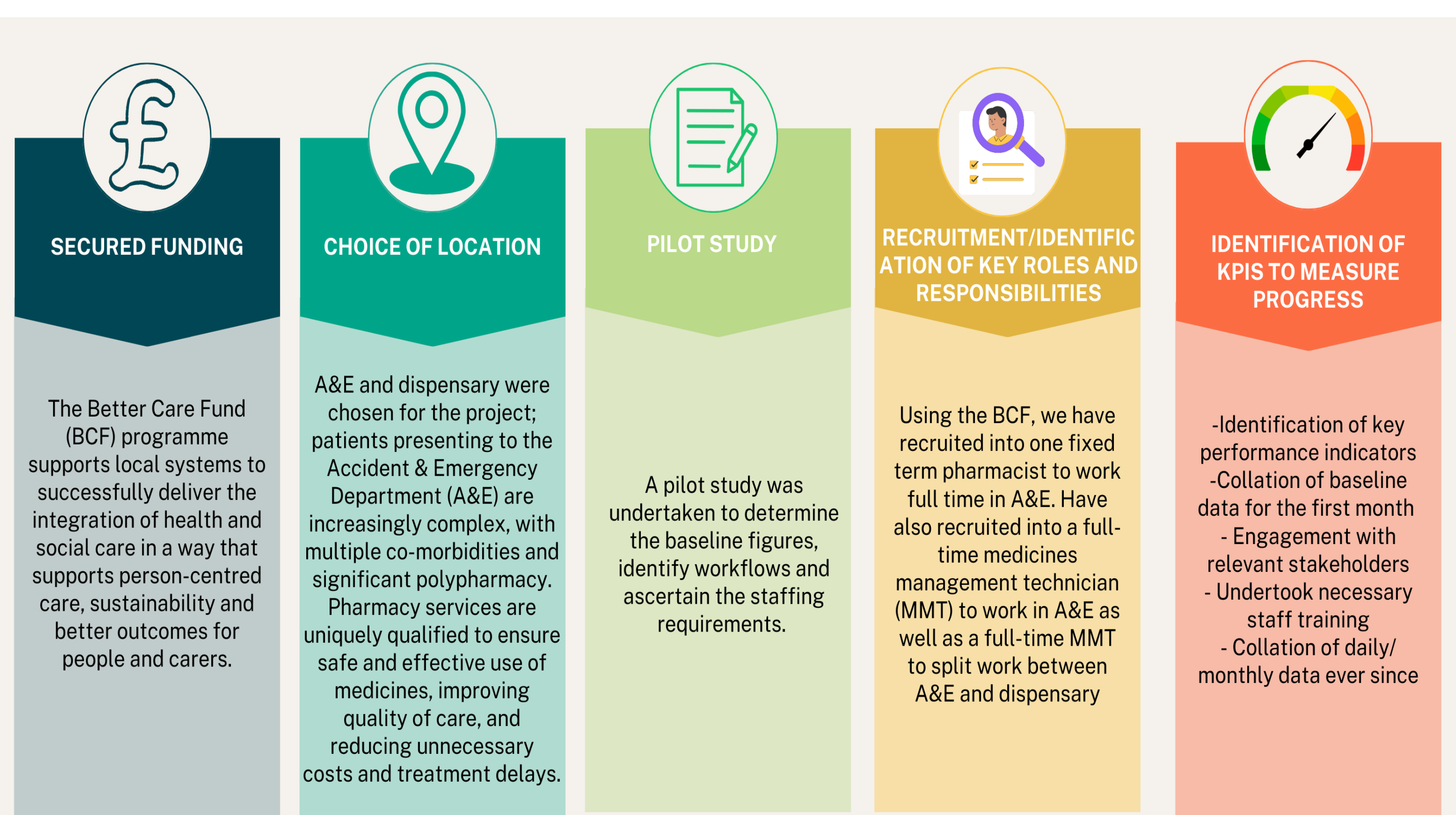
## 1. Introduction



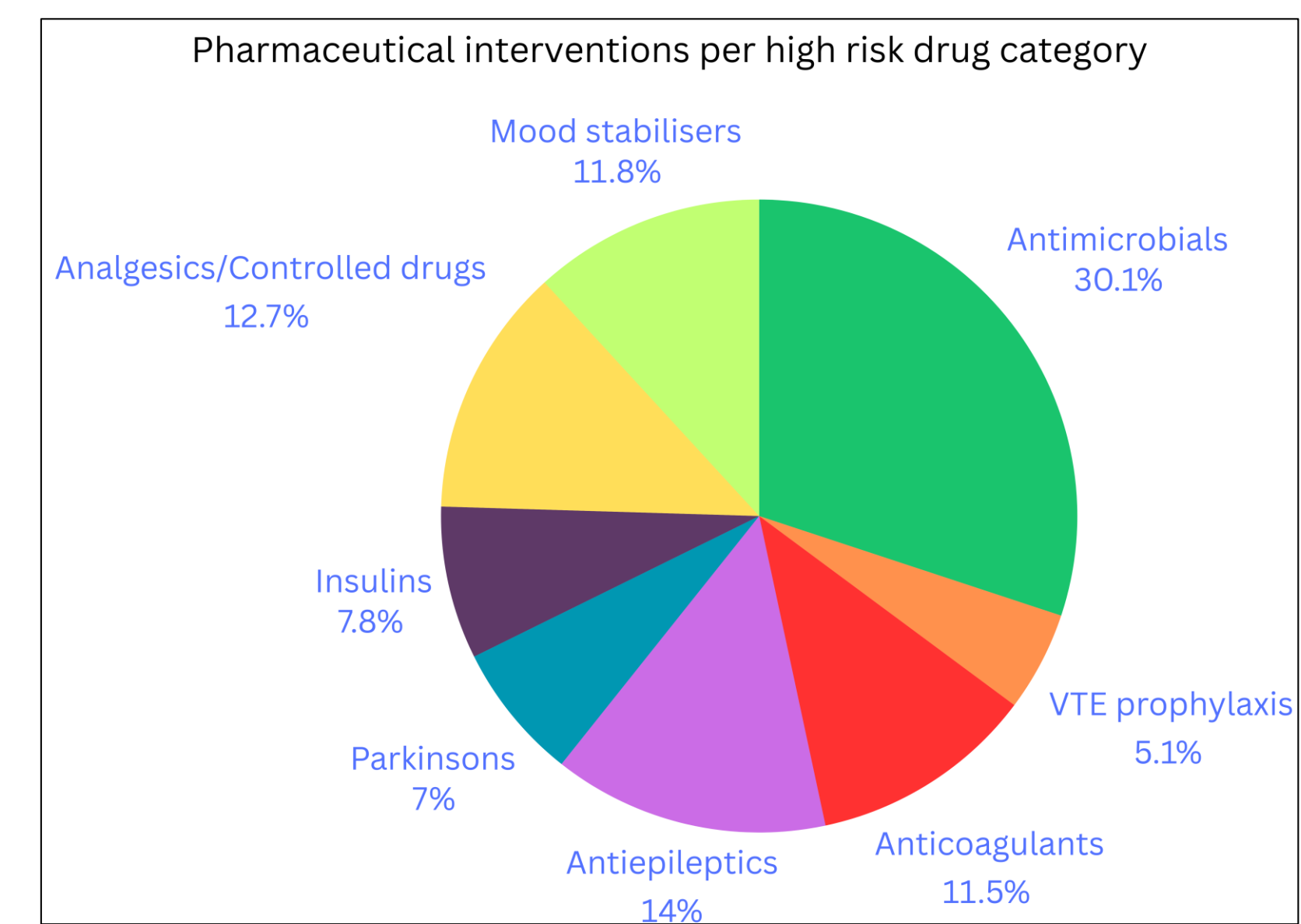
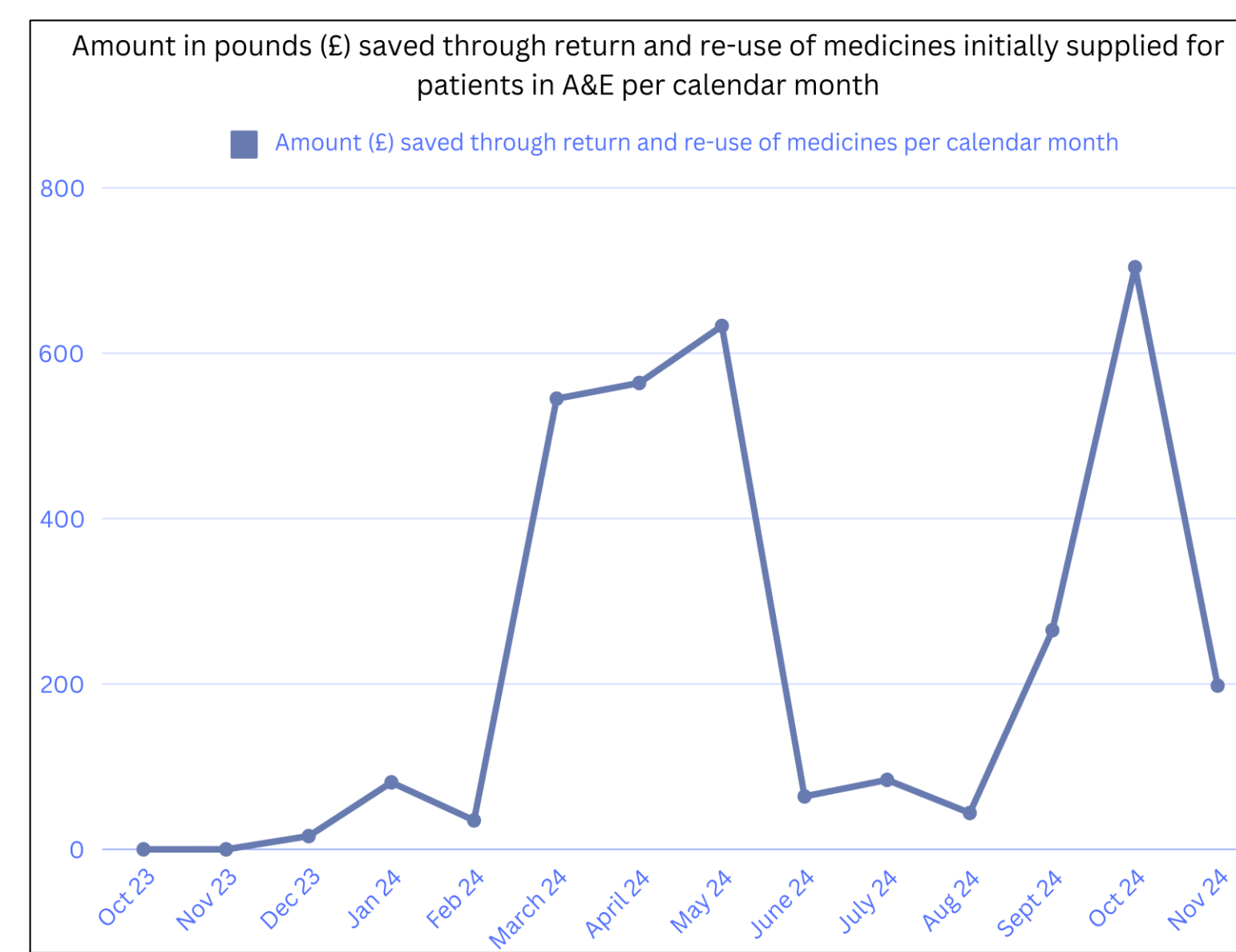
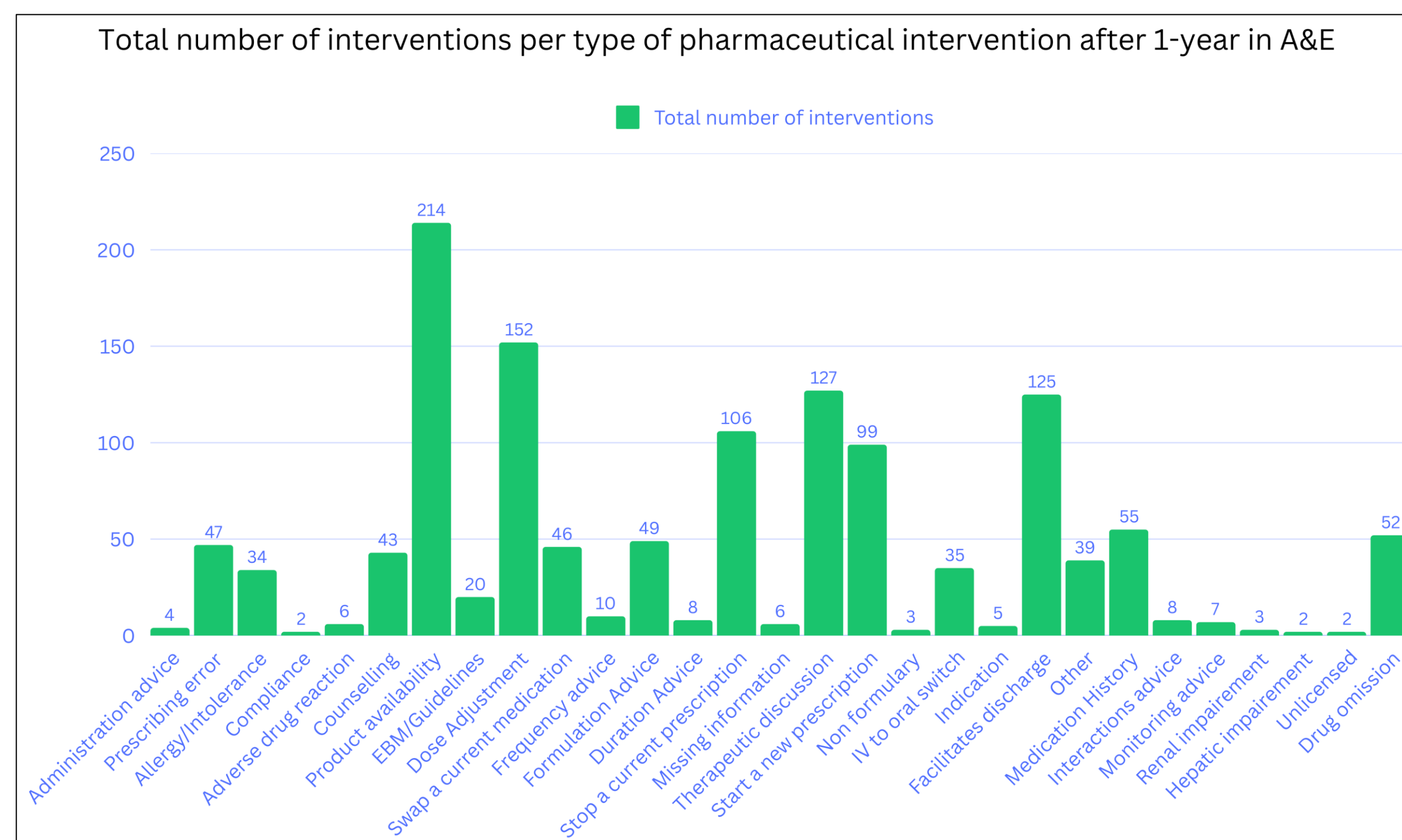
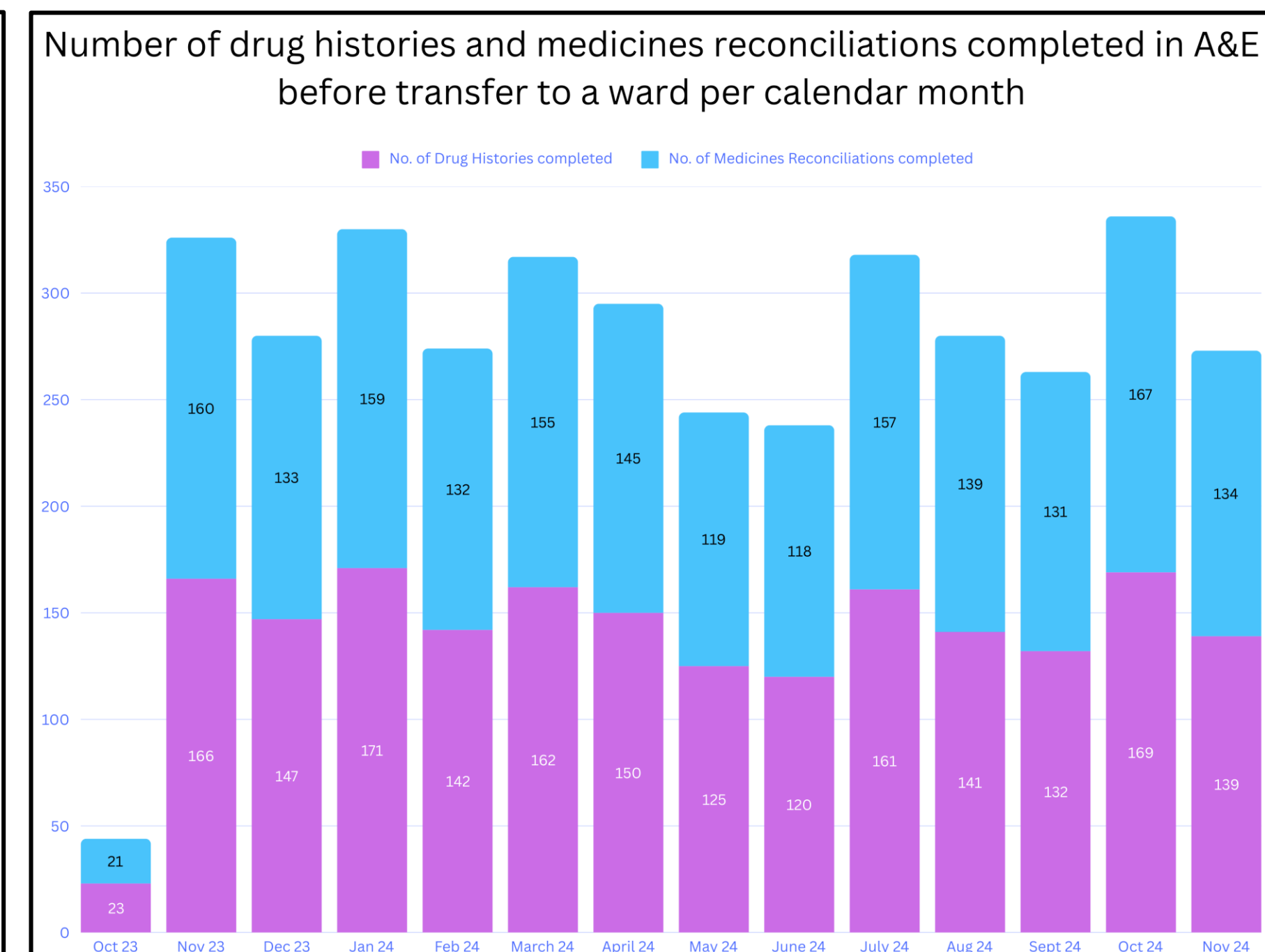
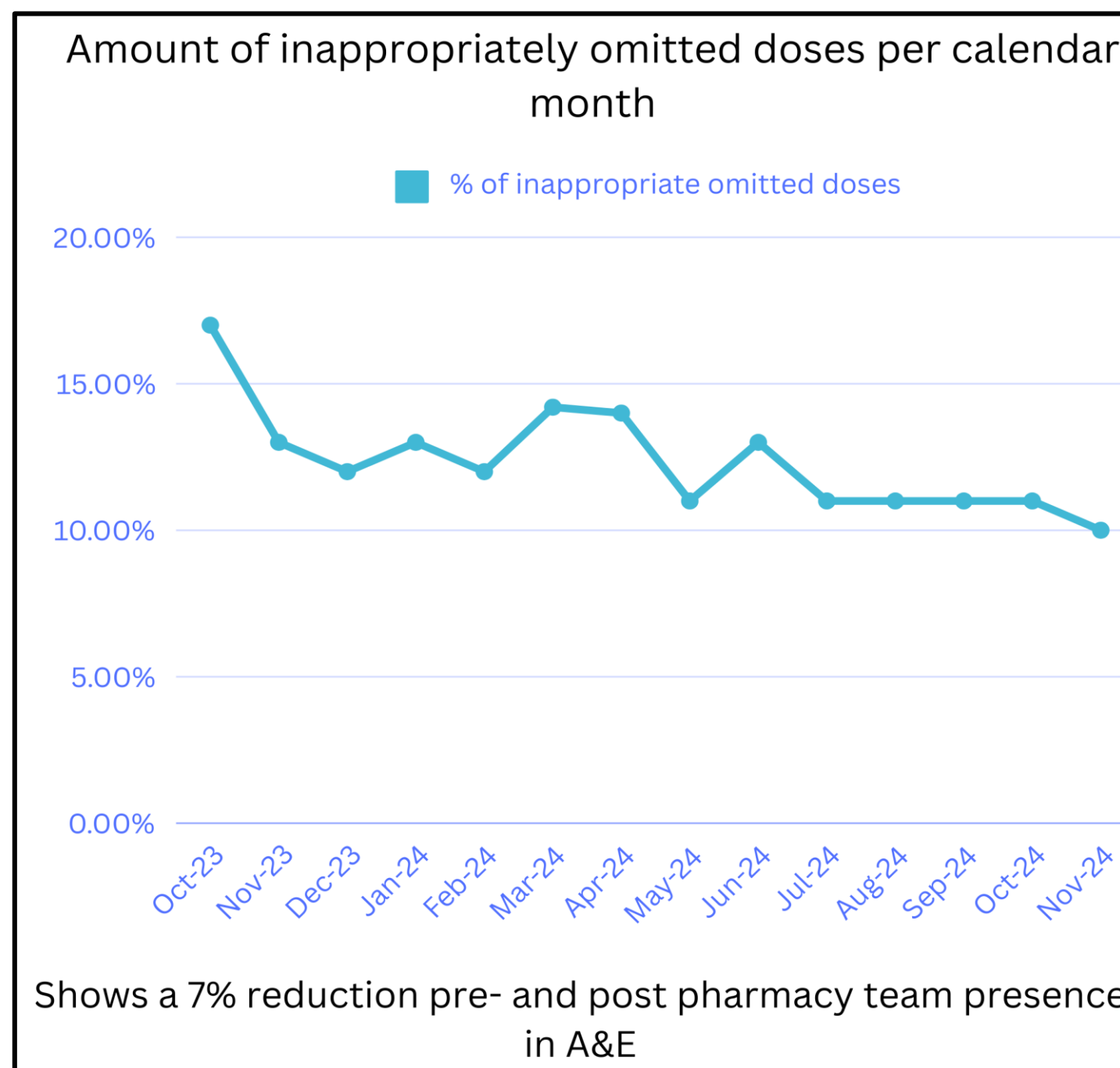
## 2. Aim



## 3. Methodology



## 4. Results & Impact



## 5. What has been achieved



The results demonstrate good progress against the KPIs and safer flow of patients within the hospital. Aim to continue review further the KPIs and provide a variety of results to consider when establishing a permanent service in A&E.

## 6. What's next

- ❖ Apply for a business case with the new financial year (April 2025)
- ❖ Establish a permanent pharmacy service in A&E CUH
- ❖ Continue working on the KPIs and add new depending on the service needs

## References

1. RCEM\_UKCPA\_Joint\_Position\_Statement\_Pharmacists.pdf

## Acknowledgments

Dimitrios Karagkounis – Highly specialist cardiac pharmacist



SCAN ME