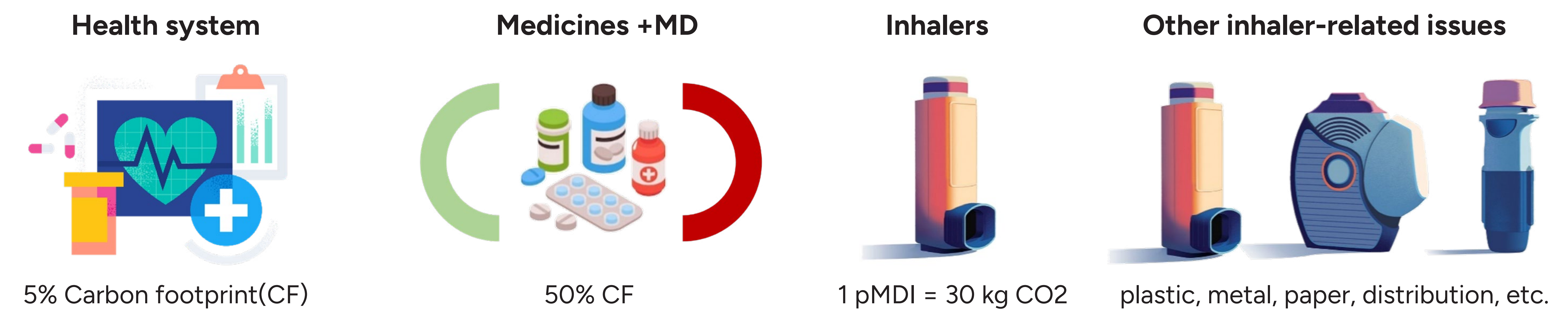


Environmental impact management of inhalers from the hospital pharmacy: the GIMAFH project

N. Garin Escriva¹, M.J. De Dios García², A.J. Sastre-Heres³, M. Coma Punset⁴, M. Zazu Vives⁵, M.D.M. Lopez-Gil Otero⁶, R. Tamayo Bermejo⁷, M.E. Navarrete Rouco⁸, B. Zarate Tamames¹

1. Hospital de la Santa Creu i Sant Pau, Department of Pharmacy, Barcelona, Spain; 2. Hospital Nuestra Señora Sonsoles - Complejo Asistencial De Ávila, Department of Pharmacy, Ávila, Spain; 3. Hospital San Juan de Dios, Department of Pharmacy, Zaragoza, Spain; 4. Hospital Santa Caterina, Department of Pharmacy, Girona, Spain; 5. Hospital Príncipe de Asturias, Department of Pharmacy, Alcalá de Henares, Spain; 6. Complejo Hospitalario Universitario de Vigo, Department of Pharmacy, Vigo, Spain; 7. Hospital Regional de Málaga, Department of Pharmacy, Malaga, Spain; 8. Hospital del Mar, Department of Pharmacy, Barcelona, Spain.

Background and Importance



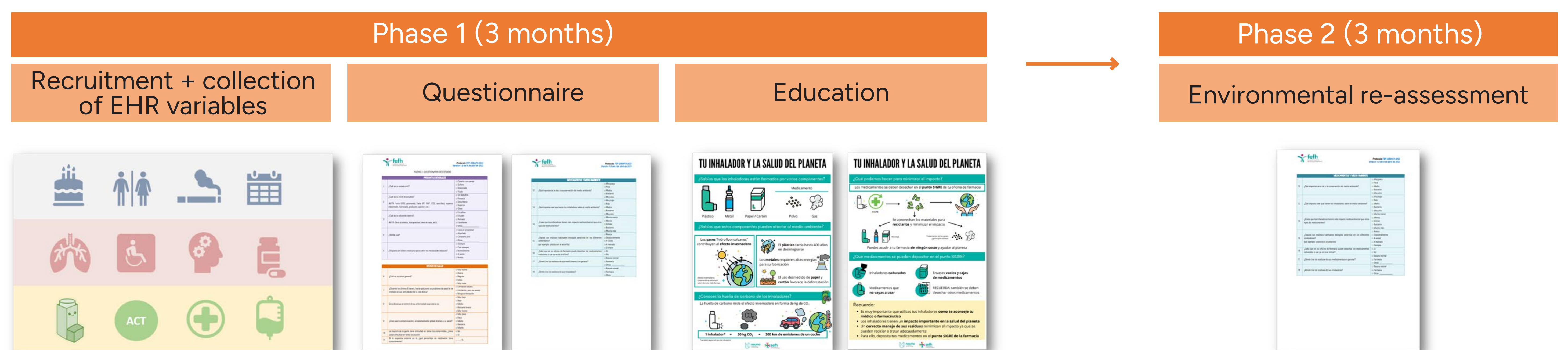
Aim and objectives

Contribute from the HP to the management of inhalers to minimize environmental impact by:

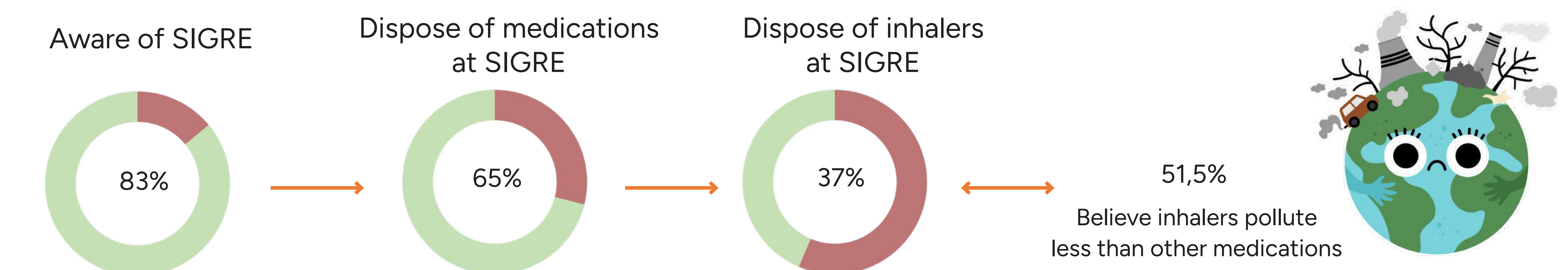
1. Exploring the prevalence of correct inhaler disposal at the SIGRE waste collection point.
2. Evaluating factors related to better management of these pharmaceutical waste.
3. Analyzing whether patient intervention improves this management.

Materials and methods

Multidisciplinary, multicenter project (42 centers), prospective in asthma patients under biological treatment.



Discussion



Conclusions and relevance

- ◆ It is necessary to increase awareness and use of the SIGRE waste collection point, especially with inhalers.
- ◆ Most patients do not know that inhalers have a greater environmental impact than other medications.
- ◆ The infographic is now available for widespread use. Phase 2 will evaluate the impact of HP intervention.