



Assessment of the accreditation and continuous education tests for pharmacy technicians within a cytotoxic reconstitution unit

S. Younsi¹, A. Cau¹, A. Fillatre², Y. Mahboub², A. Abdaoui¹, P. Saint-Germain¹

¹Saint-Quentin Hospital, Chemotherapy, Saint-Quentin, France.

²Saint-Quentin Hospital, Pharmacy, Saint-Quentin, France.

What was done?

ansm



An assessment of staff skills is required by the new French version of the framework, published in 2023, in order to guarantee the quality of preparations.

“Bonnes pratiques de préparation”

We decided to implement **an annual, specific and adapted** test to our activity.

To guarantee the **authorization of new pharmacy technicians (PT) and the continuous education (CE)** of those already present.

Why was it done?

Realization of the 2023 annual examination for the accreditation of new PTs and the continuous education of PTs already accredited.

How it was done?

The test lasts 30 minutes

1st party

10 MULTIPLES CHOICE QUESTIONS (MCQ)

pharmacology, environment, equipment, hygiene, asepsis, quality, risk management

2nd party

3 VIDEOS

(Videos exported from our digital double-check video system)

Containing errors in the preparation methods :

choice of the molecule, volume to be with drawn, dilution

EXAM VALIDATION CONDITION

A pass rate > **75%** is required

Below the required rate, a second session is mandatory

A DEBRIEFING SESSION IS ORGANIZED



Provision of a document containing the questions that posed problems (pass rate < 80%) + associated procedures



What has been achieved?

RESULTS OF THE FIRST SESSION

	Continuous Education	Accreditation
Number of PTs assessed	10	2
Average pass rate on the test	81.5 % [75 - 85 %]	70.3 %
Average success rate for the MCQ part	72.9 % [64.3 - 78.6 %]	57.2 %
Average success rate for the video part	100 %	83.4 %



RESULTS OF THE SECOND SESSION



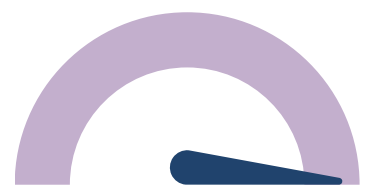
90 %

Overall test



85.7 %

MCQ part



100 %

Video part



Among the 10 MCQ → 7 had a pass rate below 80% and required a reminder.

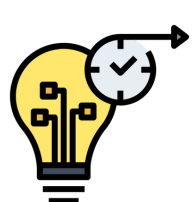


What next?



For the **CE** the results are **satisfactory** and **all the staff has been rehabilitated in the first session.**

As **for the new PT, the results were insufficient** → they were required to rework all procedures.



- This annual assessment frequency contributes to the safeguarding of our process by keeping knowledge up-to-date and reinforcing good practices.
- A satisfaction survey among PTs can be conducted to evolve our evaluation methods.

