

ACCEPTANCE OF PHARMACEUTICAL INTERVENTIONS IN A RESUSCITATION UNIT

X. Larrea Urtaran¹, E. Nogué Pujadas¹, A. Couso Cruz¹, G. Pla Escrivà², C. Batlle Perales³, C. Subirana Batlle¹, M. Bruguera Teixidor¹, C. Ortí Juan¹, A. Dordà Benito¹, M. Vila Curris¹.

¹Hospital Dr. Josep Trueta, Pharmacy Department, Girona, Spain. ²Hospital Dr. Josep Trueta, Anesthesia Department, Girona, Spain. ³Hospital Dr. Josep Trueta, Internal Medicine Department, Girona, Spain.

Abstract number: CPS13581

WHAT WAS DONE?

The integration of a pharmacist in the critical care unit allows optimizing pharmacotherapy, prevents medication errors in critical patients and working in a multidisciplinary methodology.

WHY WAS IT DONE?

The aim of the study is to analyze pharmaceutical interventions (PI) carried out by a hospital pharmacist in a Resuscitation Unit (RU) in terms of number and degree of acceptance.

HOW WAS IT DONE?



- ✓ Prospective study carried out from 01/08/23 to 15/09/23 on weekdays
- ✓ Patients with a minimum of 48 hours of admission were included
- ✓ Recorded PIs conducted during the daily clinical activity of a pharmacist at the RU



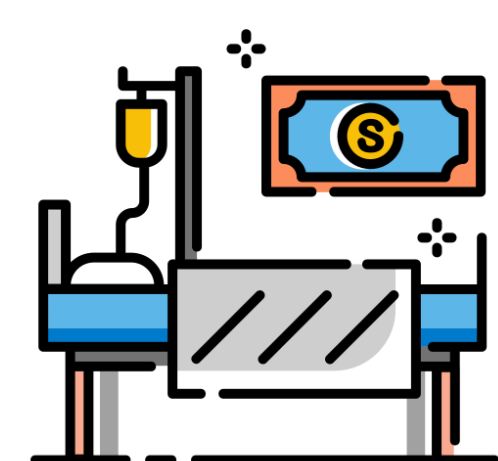
Variables collected were: age, sex, type of PI, medication involved, acceptance of PI and day since admission.



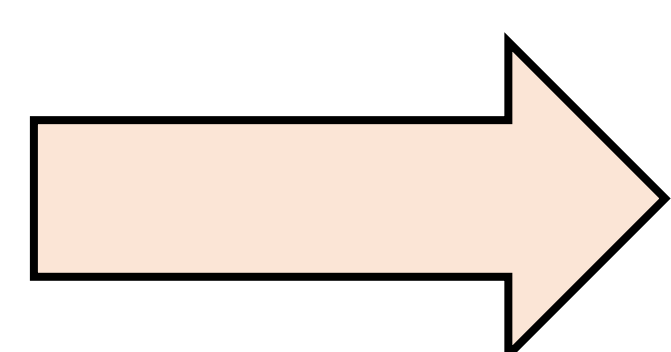
The percentage of acceptance of the PIs and activity indices:
-PI/patient.
-PI/days
-Day of PI respect to admission to the RU were calculated.

Descriptive analysis, mean and standard deviation (SD) were used.

WHAT HAS BEEN ACHIEVED?



80 patients were included
5.9 patients/day admitted in the RU

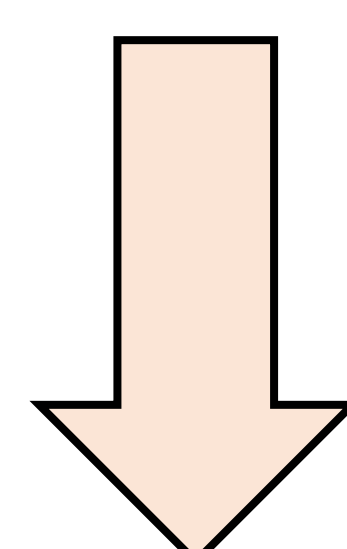


107 IPs were carried out.



The degree of acceptance of the IP was 92.5% (n=99).

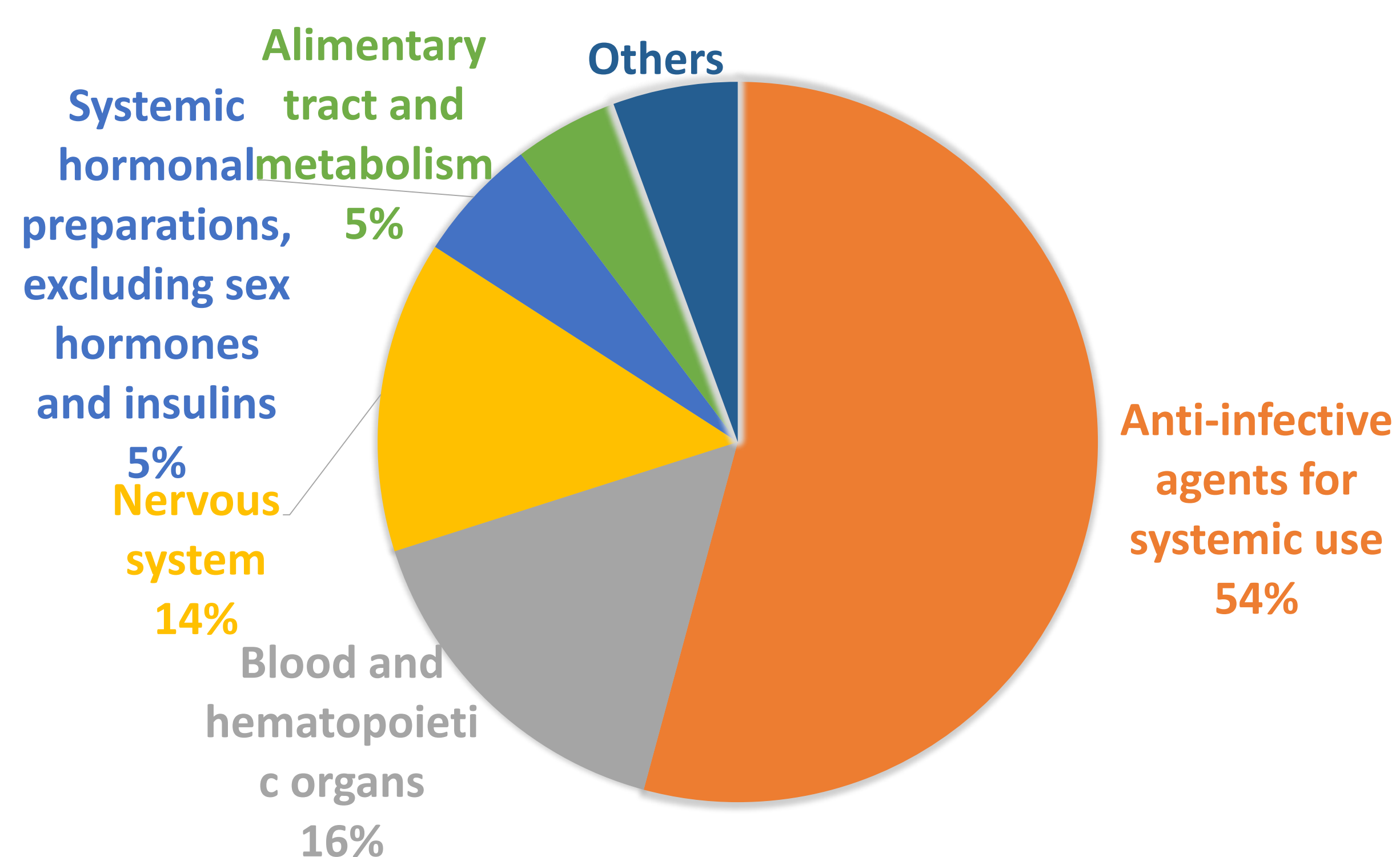
Age: 59.6 ± 18.4
46.3% were women (n=37)
 8.9 ± 3.0 drug prescriptions
 3.8 ± 2.0 infusions and on-demand drugs.



Activity indices

1.30 IP/patient
3.45 IP/day and
3.21 IP days compared to admission to the RU.

GROUPS OF DRUGS WITH IP



Pharmaceutical interventions	n=107
Adjustment of anti-infective therapy	21
Pharmacokinetic adjustment	18
Administration	17
Conciliation	16
Dose adjustment by glomerular filtration rate	16
Dose adjustment	10
Duplicity	5
Others	4

WHAT NEXT?

The acceptance of PIs in the RU is very high, being greater than 90%, with an activity of more than 3 PIs per day, reinforces the integration of a hospital pharmacist in a multidisciplinary team to ensure patient safety and improve the pharmacotherapeutic profile. It is necessary to have a pharmacist integrate in the RU.

