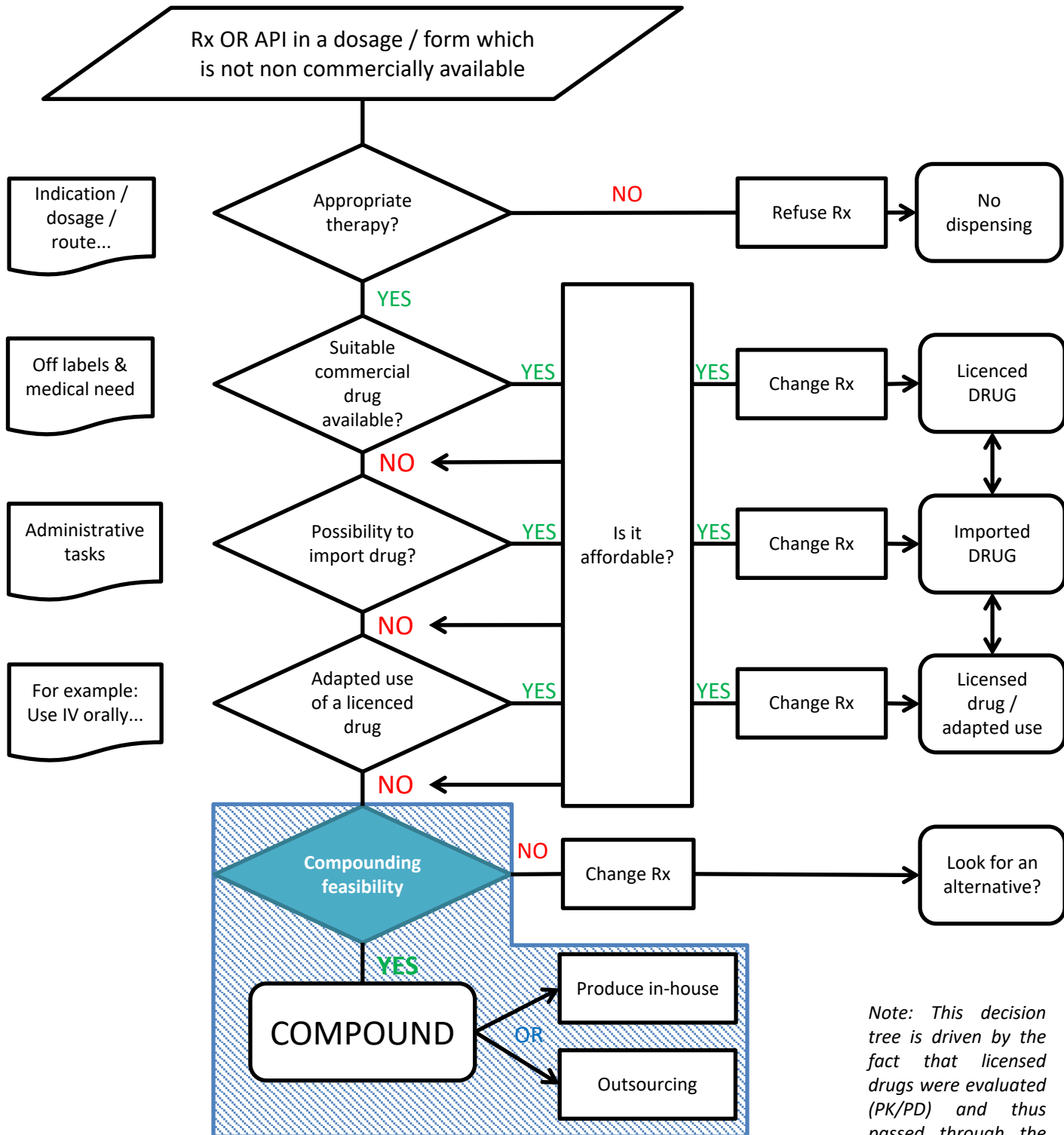


# To make or to buy - Workshop EAHP March 2019

This workshop is focused on learning a new strategy which pharmacist could apply to whether purchase drugs, produce in-house or outsource them. In the decision making pharmacist need to consider the appropriateness, affordability and if there is an added value to compound.

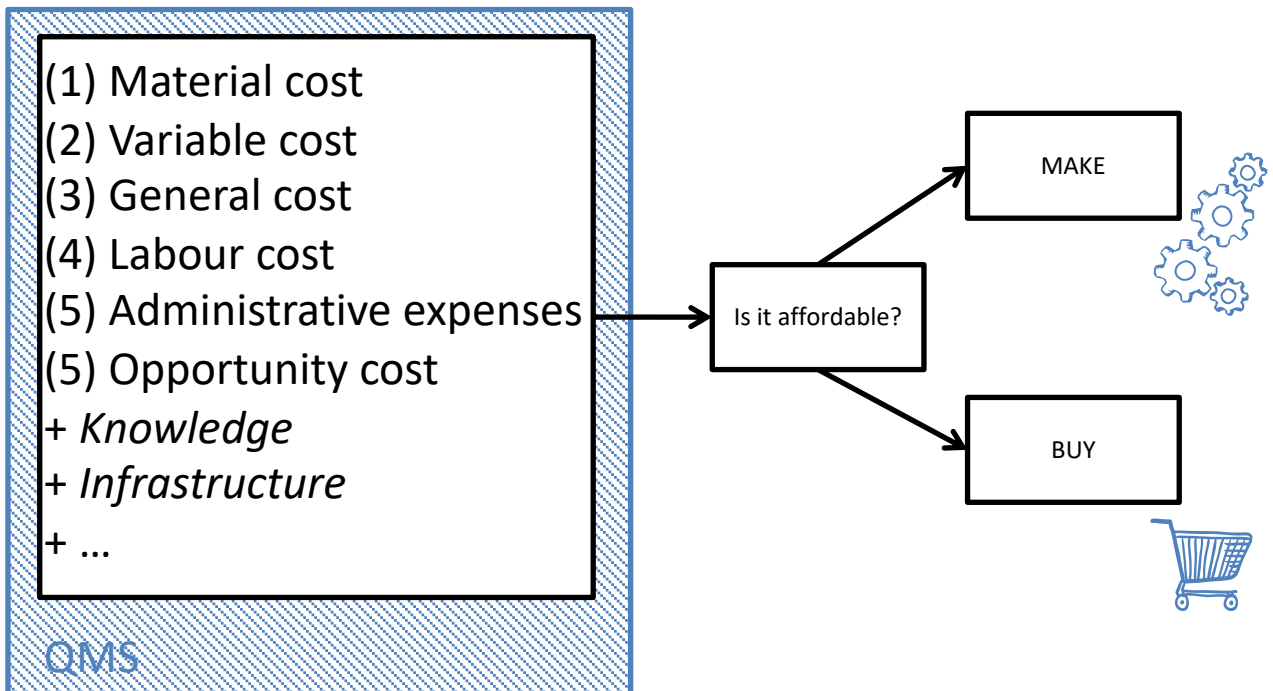
The decision tree is a tool to support pharmacist in answering relevant questions regarding the **make or buy analysis**.



*Note: This decision tree is driven by the fact that licenced drugs were evaluated (PK/PD) and thus passed through the pharmaceutical development process.*

## *If compounding is chosen, should I make or outsource it?*

Scope of evaluating the feasibility of compounding:



Remember that outsourcing a compounding process still bears the pharmacist's responsibility to ensure the same (or better) quality of compounding!