

ANALYSIS OF PERSISTENCE WITH ANTIRETROVIRAL THERAPY AMONG HIV+ PATIENTS IN THE SPANISH COHORT, PSITAR

ROBUSTILLO-CORTES MA¹, HARO-MARQUEZ CA¹, CALVO-CIDONCHA E¹, CANTUDO-CUENCA MR¹, BORREGO -ZQUIERDO Y¹, MONJE-AGUDO P¹, ALVARO-SANZ E², RIOS-SANCHEZ E³, TORTAJADA GOITIA B² MORILLO-VERDUGO R¹.

¹Valme University Hospital, Pharmacy, Seville, Spain. ²Costa del Sol Hospital, Pharmacy, Marbella, Spain. ³Puerto Real Hospital, Pharmacy, Puerto Real, Spain.

BACKGROUND AND PURPOSE

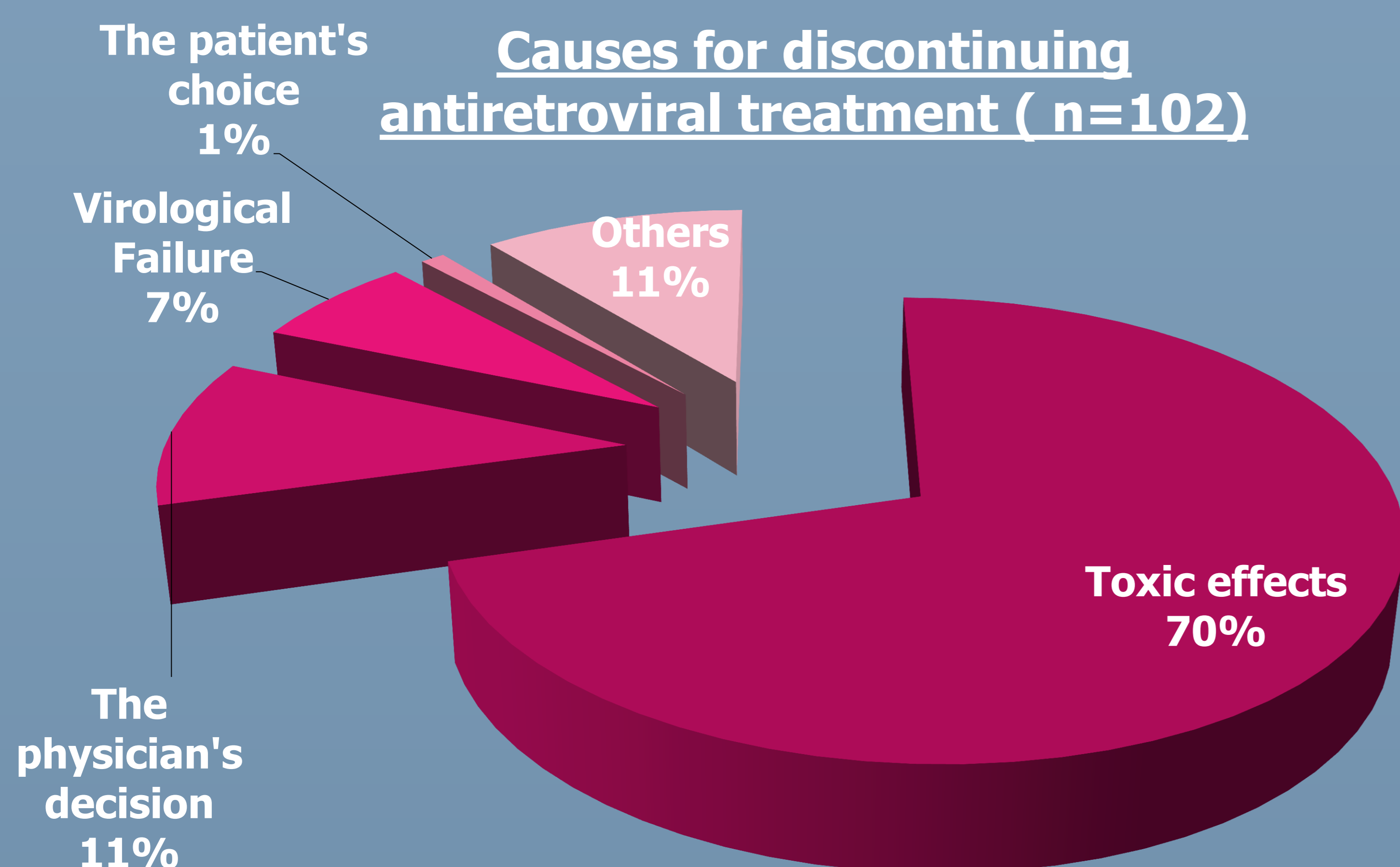
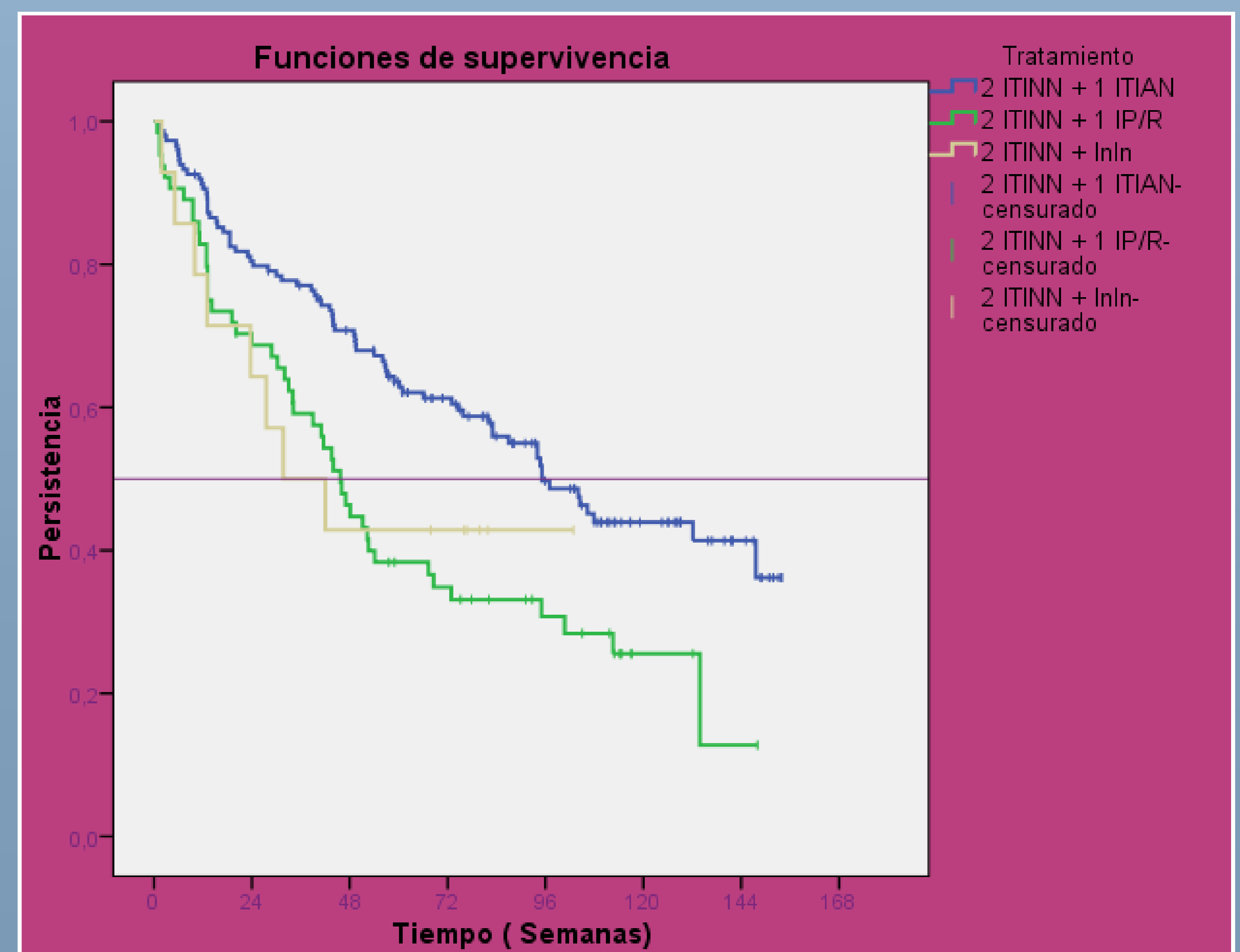
Since the introduction of HAART, HIV has become a chronic disease. Maintain adherence and persistence to treatment are key elements in the pharmacotherapeutic follow-up. Persistence adds the dimension of time to the analysis and represents the time over which a patient continues to fill a prescription. Our purpose is to determine the persistence to treatment in naive HIV + patients in the cohort PSITAR

METHODS

- Design: Prospective multicenter study.
- Population: Naive adult HIV patients who started treatment in 2011 and 2012.
- Demographic variables: Sex and age.
- Pharmacotherapeutic variables: Regimen prescribed, adherence to treatment, time to discontinuation and its cause.
- HAART medication **PERSISTENCE** was measured as the time (in weeks) from the start of treatment until discontinuation due to treatment modification or abandonment for more than 90 days.
- The evolution of persistence was through survival curves using the Kaplan-Meier method, event considering the presence of no persistence.

RESULTS

n (total)	227	
Age	40(sd±11) years	
Sex (Male)	82.4%	
Regimen	2NRTI+NNRTI	65.6%
	2NRTI+PI/r	28.2%
	2NRTI+INSTI	6.2%
Adherence	78.1%	
Median time to discontinuation	76.4 weeks (CI95%: 56.8-96.0)	



Tratamiento	Media ^a		Mediana					
	Estimación	Error típico	Intervalo de confianza al 95%		Estimación	Error típico	Intervalo de confianza al 95%	
			Límite inferior	Límite superior			Límite inferior	Límite superior
2 ITINN + 1 ITIAN	94,030	4,941	84,345	103,715	95,140	8,462	78,554	111,726
2 ITINN + 1 IP/R	63,416	6,759	50,168	76,664	45,710	4,016	37,839	53,581
2 ITINN + 1 InIn	55,154	11,358	32,892	77,415	31,710	13,498	5,254	58,166
Global	84,431	4,069	76,457	92,406	82,000	10,771	60,888	103,112

a. La estimación se limita al mayor tiempo de supervivencia si se ha censurado.

Tratamiento	2 ITINN + 1 ITIAN		2 ITINN + 1 IP/R		2 ITINN + 1 InIn	
	Chi-cuadrado	Sig.	Chi-cuadrado	Sig.	Chi-cuadrado	Sig.
Log Rank (Mantel-Cox)	2 ITINN + 1 ITIAN		11,279	,001	2,236	,135
	2 ITINN + 1 IP/R	11,279	,001		,078	,781
	2 ITINN + 1 InIn	2,236	,135	,078	,781	

CONCLUSIONS

Starting antiretroviral therapy with a better persistence is formed by 2NRTI+NNRTI with a median time to discontinuation nearly two years.