

PERSISTENCE OF INTRAMUSCULAR VERSUS SUBCUTANEOUS FIRST-LINE THERAPIES IN MULTIPLE SCLEROSIS PATIENTS

Achaques-Rodríguez M, López-Méndez P, Sánchez-Rubio J, Iglesias-Peinado I, Aladro-Benito Y, Molina-García T. T. Hospital Universitario de Getafe, Madrid, Spain

1 BACKGROUND

Parenteral first-line treatments for multiple sclerosis (MS) include disease-modifying therapies (DMTs): intramuscular (IM) interferon (IFN) beta-1-a, subcutaneous (SC) IFN-beta 1-a, SC INF-beta 1-b glatiramer acetate. Long-term persistence for chronic diseases is difficult for patients to achieve and low persistence has been related to increased mortality and morbidity as well as higher costs in medical care.

2 PURPOSE

The aim of this study is to analyze first line parenteral treatment persistence in patients with MS according to the administration route.

3 METHODS

Observational, retrospective and longitudinal study.

Inclusion criteria:

- ✓ MS adult patients (≤18 years).
- ✓ First-line treatments (IM IFN-beta-1-a, SC IFN-beta 1-a, SC INF-beta 1-b and glatiramer acetate).
- ✓ Study period: 1st September 2005 to 31st August 2015.

PERSISTENCE

- Continuous variable: Time from initiation to discontinuation of therapy
- Dichotomous variable at first and second year of therapy

For the analysis of persistence, a survival analysis with Kaplan-Meier estimator was used. The log-rank test was used to compare survival times between administration routes. Persistence at first and second year was compared using a Chi-square test. Statistical analysis were performed using SPSS®.

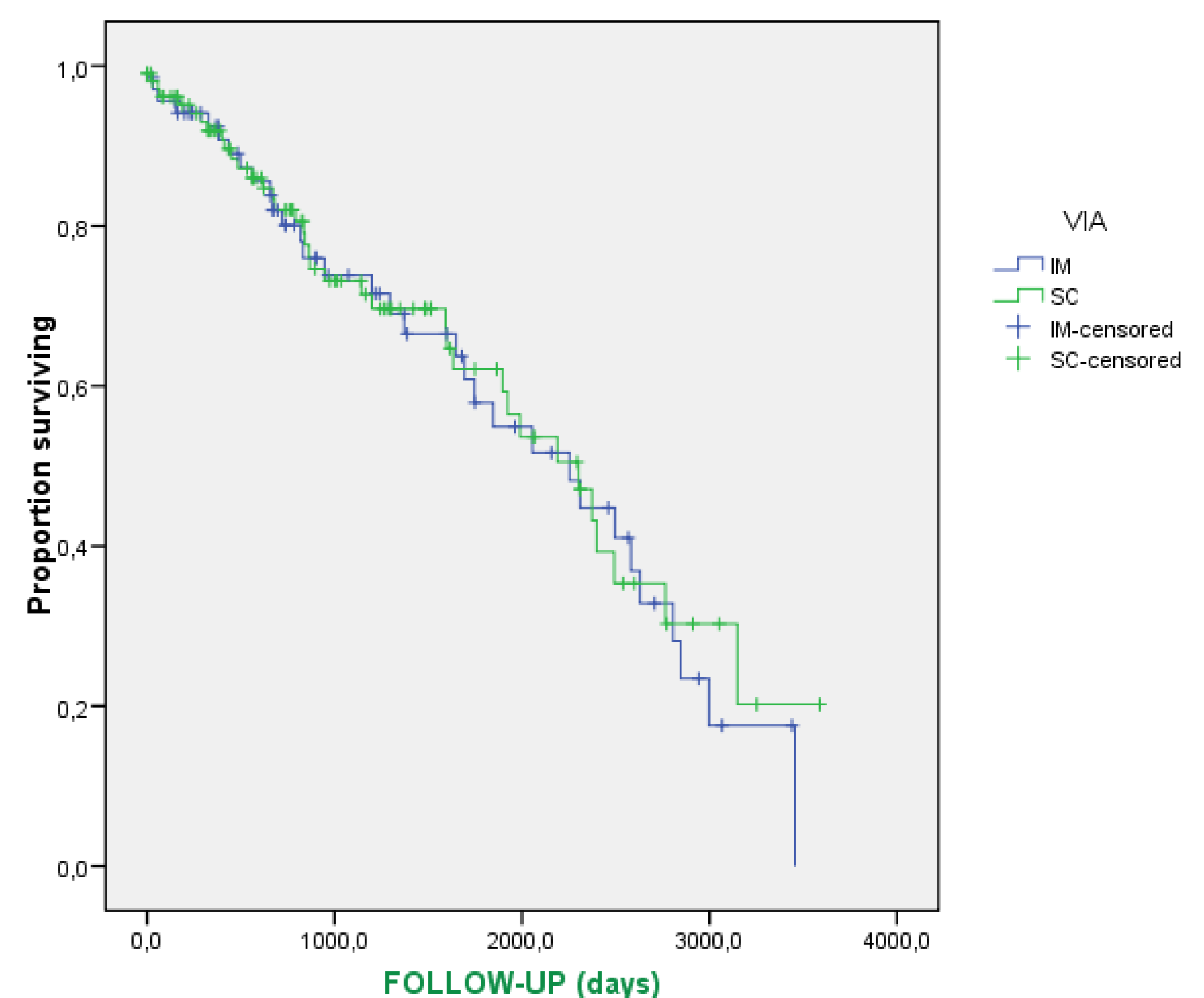
Covariables:

- ✓ Demographics (gender, age).
- ✓ Adherence.
- ✓ Treatment.

Covariables influence was tested according to a Cox regression model

4 RESULTS

Number of patients	176			
Sex	67.6 females		32.4 males	
Mean age (±SD)	36.27± 11 years			
Mean adherence (±SD)	93.6%±16.5%			
Mean persistence (days)	Overall	2,043 (CI 95% 1,827-2,260)	p=0.217	
	IM route	2,007days (CI 95% 1,580-2,927)	p=0.751	
	SC route	2,302days (CI 95% 1,799-2,805)		
% persistent patients	1 st year	IM route	81.2%	p=0.506
		SC route	75.7%	
	2 nd year	IM route	68,3%	p= 1.000
		SC route	68,1%	



5 CONCLUSIONS

There were no differences regarding persistence between IM or SC first-line therapies in MS patients.

Conflict of interest: nothing to disclose

Email: marta.achques@salud.madrid.org