

LOSS TO FOLLOW-UP FACTORS OF PEOPLE LIVING WITH HIV

Vélez-Díaz-Pallarés M¹, Montero Llorente B¹, Parro Martín MÁ¹, Molina Mendoza MD¹, Gemeno López E¹, Hernández Huerta D², Vivancos Gallego MJ³, Del Campo Albendea L^{4,6}, Muriel García A^{4,5}, María Álvarez-Díaz AM¹.

1.Pharmacy Department, Hospital Universitario Ramón y Cajal; 2.Psychiatry Department, Hospital Universitario Ramón y Cajal; 3.Infectious Diseases Department, Hospital Universitario Ramón y Cajal; 4.Clinical Biostatistics Unit, Hospital Universitario Ramón y Cajal, IRYCIS, Madrid, Spain; 5. Nursing and Physiotherapy Department, Universidad de Alcalá. Madrid, Spain. CIBERESP; 6.Epidemiology and Public Health PhD program. Universidad Autónoma de Madrid, Spain

BACKGROUND AND IMPORTANCE

Loss of adherence to antiretroviral treatment (ART) is one of the leading causes of virological failure in people living with HIV (PLWHIV). Lack of adherence is associated with a loss of follow-up by the health system, particularly in the Pharmacy Department.

AIM AND OBJECTIVES

To identify **factors** in PLWHIV which cause their follow-up to fail by the Pharmacy Department.

MATERIALS AND METHODS

The study was developed in a tertiary hospital which attends over **3,000 PLWHIV**. Patients who had run out of medication for more than one month, according to pharmacy registrations between September 2020 and September 2021, were identified and named after cases if the reason to not come to the Pharmacy were not justified (death, hospital transfer, inclusion in a clinical trial, etc.). We conducted a **case-control study** (1:4), and cases were **matched according to age** (± 5 years) and date of the last dispensation.

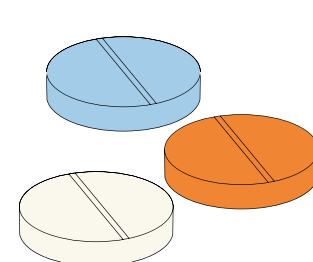
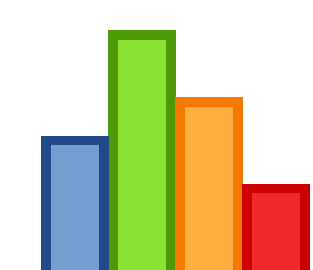
Statistical analysis was performed using the STATA 17.0 program (StataCorp LLC). All models were performed univariately, and a $p < 0.05$ was considered significant.

Data were obtained from the clinical database.

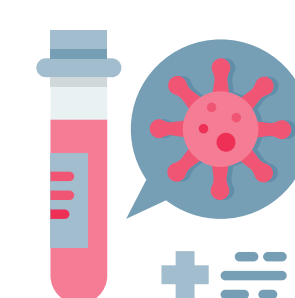
Variables studied were:



- Gender
- Age
- Region of birth
- Studies
- Stable housing
- Stage



- CD4 nadir
- Years after diagnostic
- Type of ART
- Years on ART
- Adverse effects to ART
- Number of lines of treatment



- Route of HIV transmission
- Pharmacy registrations of adherence
- Alcohol use
- Drug use
- Psychiatric problems.

RESULTS

61 cases were identified and matched with **244 controls**. Statistical differences were found in:

Region

Latin-American

Have an OR=2.7
(CI 95% 1.3-5.6, $p=0.008$)

Gender

cis men

Have an OR=4.5
(CI 95% 1.0-19.6, $p=0.047$)
*in comparison with *cis* women

trans women

Have an OR=23.9
(CI 95% 2.9-195.8, $p=0.003$)

Patients who:

Fail to adhere to treatment

According to the records in Pharmacy have an OR=0.04 (CI 95% 0.01-0.11, $p=0.000$)

Are alcoholics

Have an OR=3.24
(CI 95% 1.30-8.04, $p=0.011$)

Drug abusers

Have an OR=2.01
(CI 95% 1.03-3.93, $p=0.039$).

CONCLUSION AND RELEVANCE

- Clinicians should pay special attention to *cis* or *trans* women, Latin Americans, historic bad adherence registrations by pharmacists and alcoholic or drug abusers who are more prone to losing follow-up in their treatments. This enhances the importance of multidisciplinary team approach to these patients. Clinical, pharmacist and nurse interventions and information registration are crucial to identify these patients.

