

COMPARATIVE EFFICACY OF RISANKIZUMAB AND GUSELKUMAB IN MODERATE TO SEVERE PLAQUE PSORIASIS

M. Rodríguez Goicoechea¹, B. Morales Rivero¹, E. Tejedor Tejada², N. García Gómez¹,
M.J. Barbero Hernández¹, F. Horno Ureña¹

1. University Hospital Complex of Jaén, 2. Clínic Hospital of Barcelona

Background and importance

Anti-interleukin 23 drugs were approved in the last 5 years. The absence of comparison between alternatives such as risankizumab (RIS) or guselkumab (GUS) needs to be fulfilled.

Aim and Objectives

To evaluate the effectiveness through indirect comparisons of risankizumab and guselkumab in plaque psoriasis.

MATERIALS AND METHODS

Multicentric, retrospective and observational study. Comparison made with plaque psoriasis patients with active treatment with risankizumab or guselkumab

Time: June 2021 - June 2022.

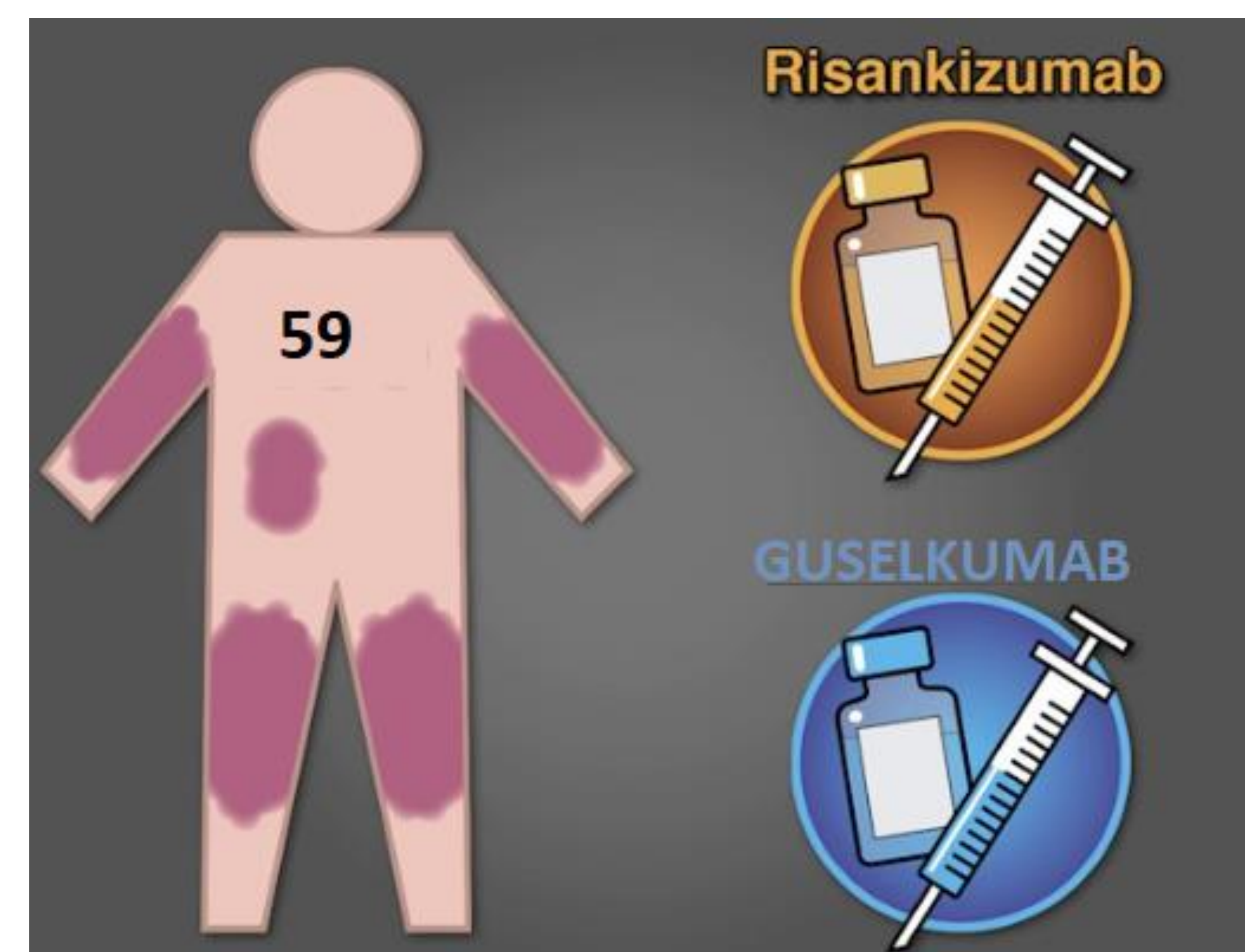
RESULTS

N = 59 patients with RIS and 49 patients with GUS

Sex: 64% men with RIS and 59.2% with GUS

Average age: RIS 52.4 +/- 15.3 years vs GUS 50.9 +/- 12.1 years

		Baseline	23 weeks	40 weeks	64 weeks
RIS	BSA	11.4±8.2	2.24±6	0.66±1.3	0.68±0.94
	PASI	8.7±4.2	1.81±3.7	0.64±1.0	0.9±1.14
	PASI100		46%	64%	57%
GUS	BSA	10.25±2.1	22.9±13.1	1.82±3.28	0.95±1.55
	PASI	8±6.6	3.87±9.28	1.89±3.3	0.53±0.92
	PASI100		45%	50%	67%



DATA	
Demographic data	Age
	Sex
Effectiveness	Body surface area (BSA)
	Psoriasis area severity index (PASI) and reduction by 90%
	Adverse events
Security	

Conclusion and Relevance

RIS and GUS are effective alternatives for plaque psoriasis treatment, although it seems that after a year, the activity of RIS starts to decrease. Further studies should be performed to determine this hypothesis.



4CPS-232

REFERENCES

Hampton P, Borg E, Hansen JB, Augustin M. Efficacy of Brodalumab and Guselkumab in Patients with Moderate-to-Severe Plaque Psoriasis Who are Inadequate Responders to Ustekinumab: A Matching Adjusted Indirect Comparison. *Psoriasis (Auckl)*. 2021 Nov 3;11:123-131. doi: 10.2147/PTT.S326121. PMID: 34765537; PMCID: PMC8575184.

ATC L04 -

IMMUNOSUPPRESSANTS

Investigator contact:

Misael.rodriguez.sspa@juntadeandalucia.es