

REAL-LIFE EXPERIENCE WITH TALQUETAMAB IN RELAPSED OR REFRACTORY MULTIPLE MYELOMA: CASE REPORT

L.Coiduras Del Olmo¹; P.Ortega Menéndez²; G.Pinilla Lebrero¹; E.García Martín¹; A.Narrillos Moraza¹; M.Loysele Susmozas¹; E.Martín Vega¹; E.López Aspiroz¹; A.Martínez Hernández¹
Infanta Sofia University Hospital, Pharmacy Department¹;
Jiménez Díaz Foundation University Hospital, Pharmacy Department²

BACKGROUND AND IMPORTANCE

Talquetamab is a humanized bispecific antibody targeting CD3 on T cells and GPRC5D on myeloma cells. It is an orphan drug used to treat relapsed or refractory multiple myeloma (RRMM).

AIM AND OBJECTIVES

To evaluate the **effectiveness and safety** of talquetamab in RRMM patients treated at two university hospitals.

MATERIALS AND METHODS

Study design

Observational, retrospective, multicenter
January 2023 – September 2025

Variables

Sex, age, myeloma subtype, number of prior therapies, effectiveness, safety (adverse events)

Population


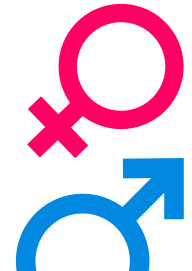
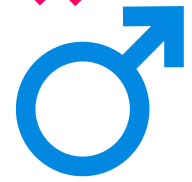
RRMM patients who received ≥ 3 prior treatment lines (including an immunomodulatory agent, a proteasome inhibitor, and an anti-CD38 antibody)

Definition of Effectiveness

- ✓ Normal total protein (TP) levels (6–8.3 g/dL)
- ✓ Undetectable monoclonal component (MC)

*One patient, who received talquetamab as bridging therapy to CAR-T, was excluded from the analysis

RESULTS

 **N = 6** →  50%
 50%
Mean age: 77,6 \pm 5 years
Mean PFS: 3,6 \pm 2 months

Myeloma subtype:
IgG lambda (n=3)
IgG kappa (n=2)
Biclonal gammopathy IgG-kappa/lambda (n=1)

Median number of prior therapies:
4 (range 3–6)

Figure 1. Serum MC levels

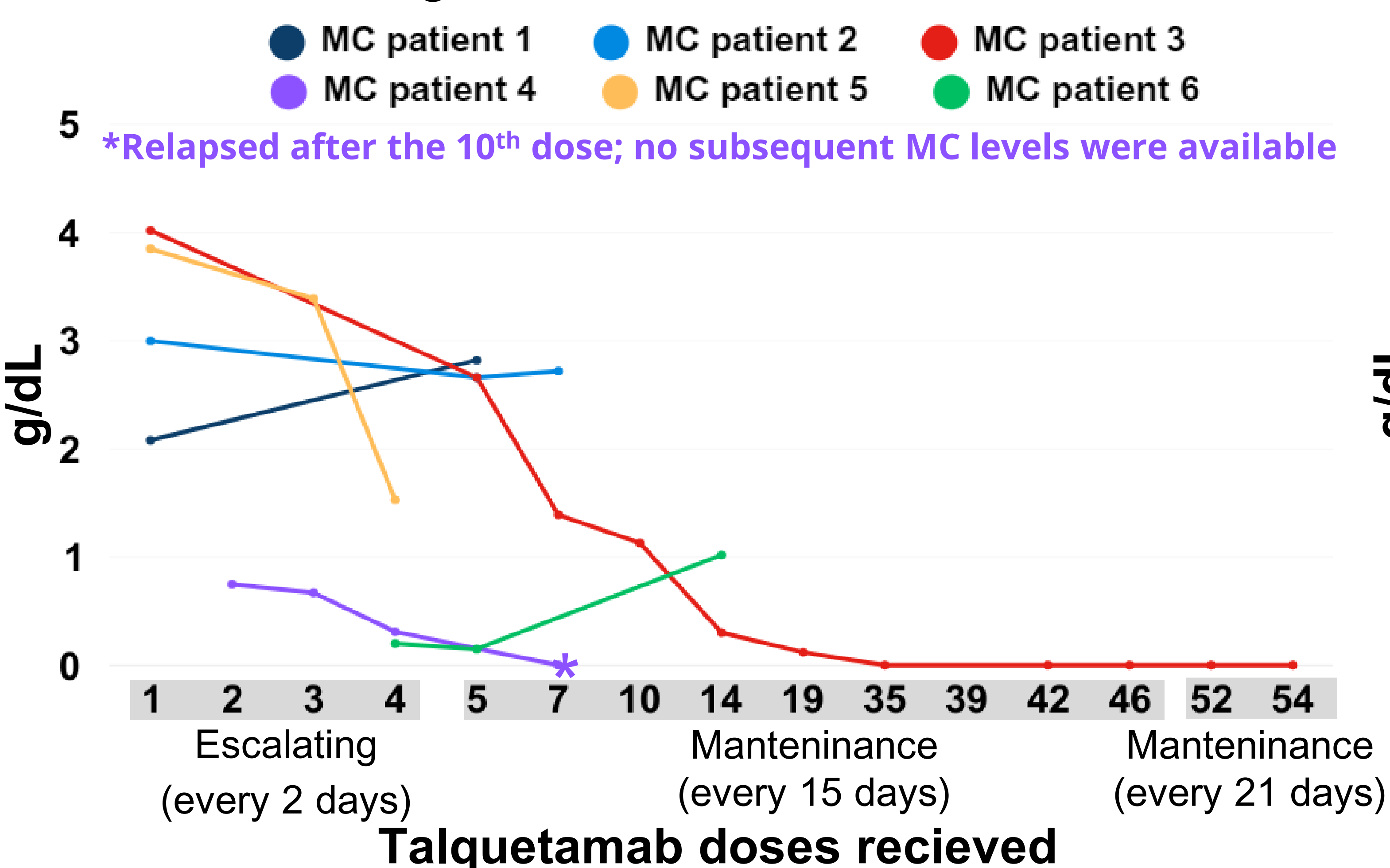
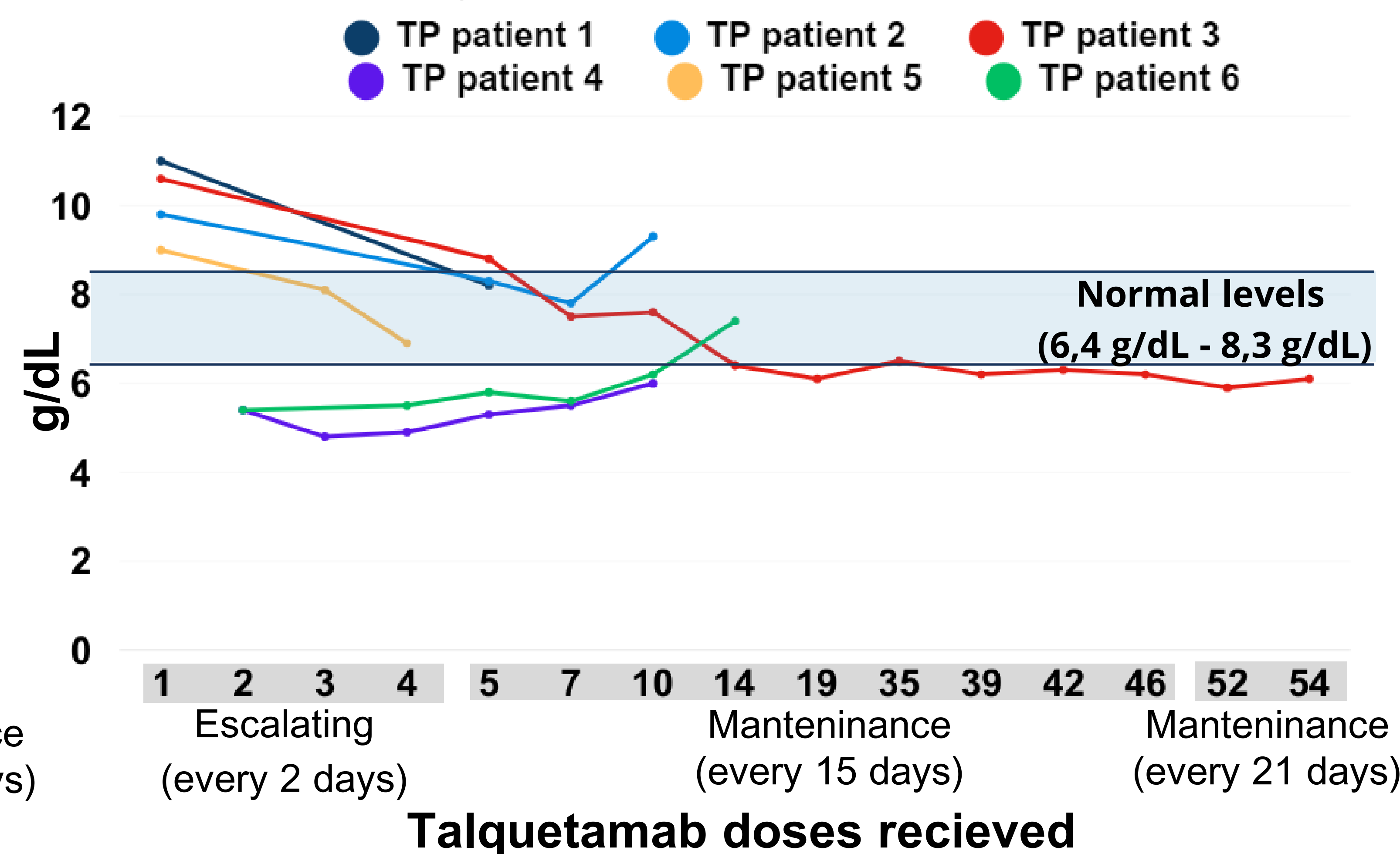


Figure 2. Serum TP levels



Patient 3 achieved complete remission

Principal adverse events (AEs)

100% (n=6)
Cytokine release syndrome
Asthenia

67% (n=4)
Skin lesions
Infections

50% (n=3)
Neutropenia

33% (n=2)
Hepatic, gastrointestinal and
hematologic abnormalities

17% (n=1)
Cardiac abnormalities
Facial paralysis

CONCLUSIONS

- Talquetamab demonstrated biological activity in pretreated RRMM patients, with one complete remission observed.
- AEs were manageable with supportive therapy.
- Larger real-world studies are needed to confirm these preliminary findings.

CHECK THIS
OUT!



4CPS-069