

# IMPLEMENTATION OF A PROTOCOL FOR THE SELECTION OF ANALGESIC MIXTURE DRUGS ACCORDING TO PAIN INTENSITY IN A POSTOPERATIVE PAIN UNIT

DI-106

ZAMORA FERRER, E<sup>1</sup>; HEREDIA BENITO, M<sup>1</sup>; SANCHEZ CASANUEVA, T<sup>2</sup>; VALENZUELA GAMEZ, JC<sup>1</sup>; NIETO-SANDOVAL MARTÍN DE LA SIERRA, P<sup>1</sup>

<sup>1</sup> Mancha Centro General Hospital, Alcázar de San Juan; <sup>2</sup> Tomelloso Hospital (C.Real, Spain)

## PURPOSE:

To improve medical analgesic prescription according to pain intensity considering warnings and main drug interactions

## MATERIAL AND METHODS:

Bibliographic review from January 2004 to August 2013 in several databases and scientific journals.

## RESULTS:

A protocol of postoperative analgesia based on a pain severity prediction according to the type of surgery procedure performed.

## PROTOCOLS

### MILD PAIN

#### IV (Intravenous via)

PS (Physiological saline) 100ml  
2ml/h for 50 hours

Type 1: Tramadol 6mg/ml  
Type 1-RI: Tramadol 4mg/ml  
Type 2: Dypirone 120mg/ml  
Type 3: Ketorolac 1,8mg/ml  
Type 3-RI: Ketorolac 1,2mg/ml  
Type 4: Tramadol 6mg/ml+ Dypirone 120mg/ml  
Type 4RI: Tramadol 4mg/ml+ Dypirone 120mg/ml  
Type 5: Tramadol 6mg/ml+ Ketorolac 1,8mg/ml  
Type 5-RI: Tramadol 4mg/ml+ Ketorolac 1,2mg/ml

### SEVERE PAIN

#### IV

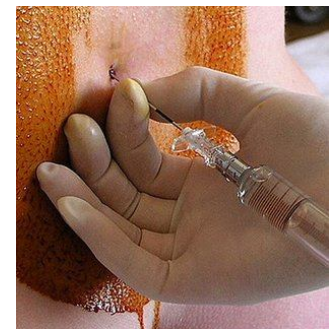
PS 100ml 2ml/h for 50 hours

Type 1: Morphine 0,3mg/ml+ Droperidol 0,025mg/ml  
Type 2: Morphine 1mg/ml PCA  
Type 3: Morphine 0,3mg/ml+ Dypirone 120mg/ml  
Type 4: Morphine 0,3mg/ml+ Dexketoprofen 3mg/ml

#### EPHIDURAL VIA

PS 250ml 5ml/h for 50 hours

Type 1: Bupivacaine 0,1%  
Type 2: Bupivacaine 0,1%+ Fentanyl 2mcg/ml



**CONCOMITANT ANALGESIA:** Paracetamol IV 1g/6h (dose adjustment in liver disease) and dypirone IV 2g/6-8h or dexketoprofen IV 50mg/8h.

**GENERAL RECOMMENDATIONS:** Use gastroprotective drugs with nonsteroidal antiinflammatory drugs. Use antiemetic drugs in nauseas or vomits. Avoid intravenous ketorolac or dexketoprofen use for more than 2 days.

**RESCUE ANALGESIA:** Morphine IV 0,05mg/kg/4h or pethidine IV 25-100mg/4h

**NEUROPHATIC PAIN:** Amitriptyline, pregabalin or duloxetine

## CONCLUSION

The analgesic protocol implement has a role in medical prescription adecuation and an impact on rational drug use. It contributes to identify patients who could benefit from a specific drug combination and minimize possible drug side effects