

# EFFECTIVENESS OF SORAFENIB IN ADVANCED HEPATOCELLULAR CARCINOMA IN REAL-LIFE CONDITIONS

X. García-González, Á. Giménez-Manzorro, V. Escudero-Vilaplana, A. Herranz-Alonso, S. Buendía-Bravo, B. Monje-García, M. Sanjurjo-Sáez.  
Hospital General Universitario Gregorio Marañón, Pharmacy, Madrid.

## BACKGROUND

Sorafenib is an oral multikinase inhibitor used for the treatment of hepatocellular carcinoma(HCC).  
•It is the only systemic treatment indicated for advanced HCC,and was included in our Hospital's formulary in 2007 .

## PURPOSE

To assess the characteristics of the patients receiving sorafenib for the treatment of HCC in our hospital and to describe the treatment effectiveness in real-life conditions

## MATERIALS AND METHODS

### DESIGN:

- Observational.
- Retrospective.

### INCLUSION CRITERIA:

- Patients with advanced HCC.
- Treatment with sorafenib started between 01/01/2007 and 31/12/2013.

### VARIABLES:

- DEMOGRAPHIC:** Age, sex.
- CLINICAL:**tumour stage according to BCLC, ECOG PS, Child Pugh, presence of macroscopic vascular invasion and/or extrahepatic spread.

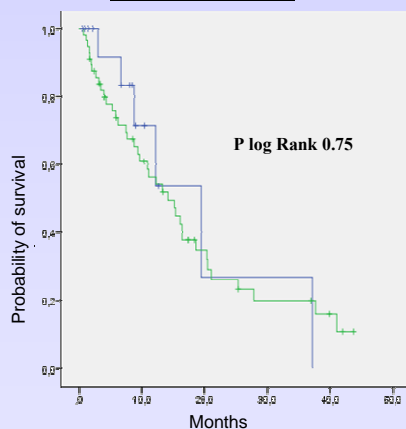
## RESULTS

Basal characteristics of the sample (n=72)	
Median age (SD)	59,1 (11,16)
<b>Sex n(%)</b>	
Male	64 (88,9)
Female	8 (11,1)
<b>BCLC tumour stage n (%)</b>	
B (intermediate)	16 (22,2)
C (advanced)	56 (77,8)
<b>ECOG PS n (%)</b>	
0-1	64 (88,9)
≥2	2 (2,8)
Not registered	6 (8,3)
<b>Child-Pugh n(%)</b>	
A	31 (43,1)
B	12 (16,7)
Not registered	29 (40,3)
<b>Macroscopic vascular invasion n (%)</b>	
	34 (47,2)
<b>Extrahepatic spread n (%)</b>	
	33 (45,8)
<b>Risk factors for HCC n (%)</b>	
Hepatitis C	45 (62,5)
Hepatitis B	10 (13,7)
Alcohol	29 (40,3)

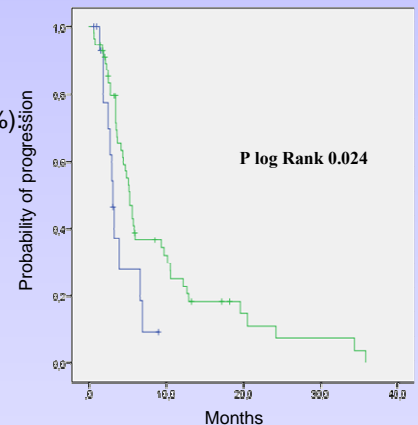
### •Patients with disease progression:

- BCLC B: 11/16 (68.8%)
- BCLC C: 45/56 (80.4%)
- Median time to progression, months (CI95%)
- BCLC B: 3.1 (2.5-3.7)
- BCLC C: 5.3 (4.4-6.1)

### Overall Survival



### Time to progression



### •Patients deceased:

- BCLC B: 6/16 (37.5%)
- BCLC C: 38/56 (67.9%)

### •Median Overall Survival, months (CI95%):

- BCLC B: 19.5 (9.6-29.4)
- BCLC C: 14.2 (8.9-19.5)

## CONCLUSIONS

- Effectiveness of sorafenib for advanced HCC under real-life conditions is consistent with the data from the clinical trials.
- According to our results, sorafenib was more likely to delay disease progression in patients with BCLC C stage, though overall survival was longer in the patients with BCLC B.