

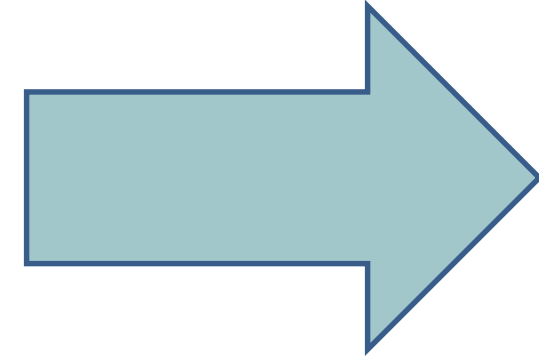
# ANALYSIS OF ADHERENCE TO JANUS KINASE INHIBITORS IN PATIENTS WITH AUTOIMMUNE DISEASES: INFLUENCING FACTORS AND OUTCOMES

Y. Viseda Torrellas, A. Martín Torrente, O. Ibarra Barrueta, O. Mora Atorrasagasti, A. Iglesias Lambarri J.A. Illodo Becerra.

Contact: [yurij.visedatorrellas@osakidetza.eus](mailto:yurij.visedatorrellas@osakidetza.eus) // Hospital Galdakao-Usansolo, Pharmacy Service. Galdakao. Spain.

## BACKGROUND AND IMPORTANCE

JAKi used in Immune-Mediated Inflammatory Diseases (IMiD)

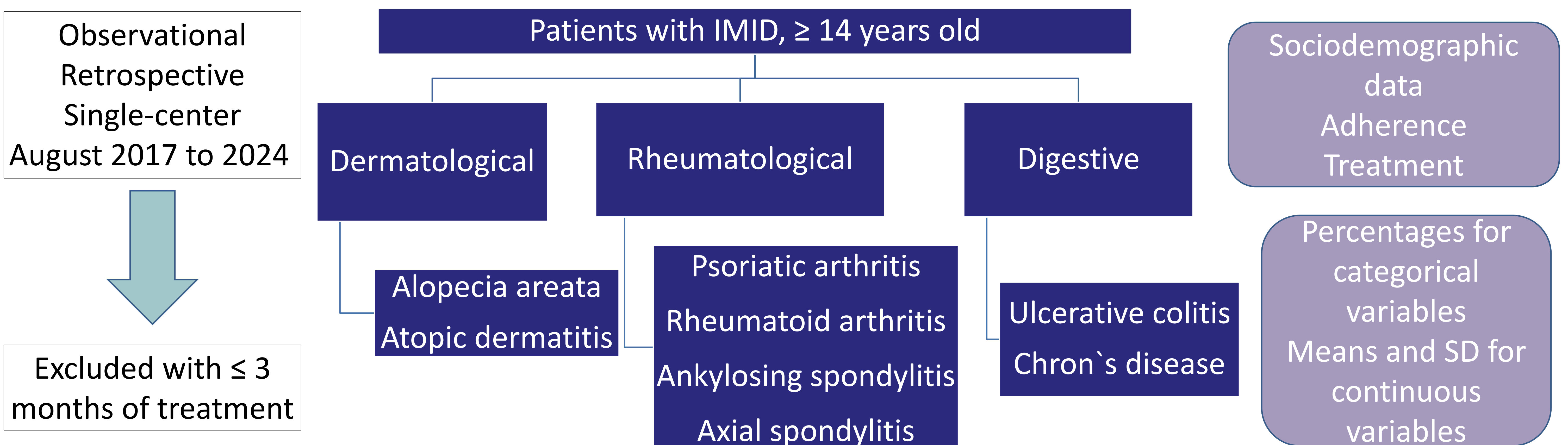


Adherence → Important to understand the clinical response

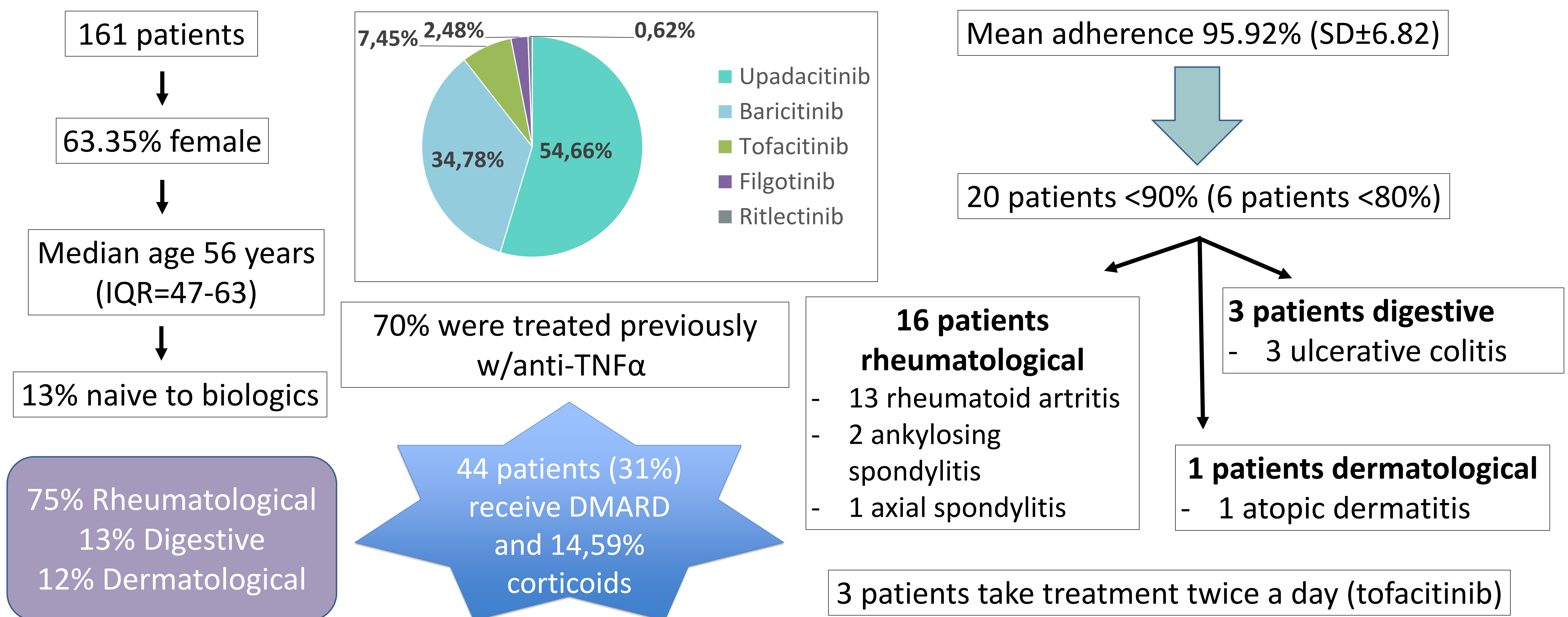
## AIM AND OBJECTIVE

Evaluate adherence to JAKi in patients with IMiD, by medication possession rate (MPR) in the previous year

## MATERIAL AND METHODS



## RESULTS



## CONCLUSIONS

Our study patients had a high level of adherence, and only 6 patients presented por adherence

This study help us to identificate patients with adherence problems

