

SIX-MONTH EVALUATION OF THE CLINICAL AND ECONOMIC IMPACT OF PHARMACEUTICAL COUNSELING IN MULTIDISCIPLINARY DAY HOSPITALISATION FOR GERIATRICS

FARCY R.¹; RIGAUD A.¹; ROUSSEL A.¹; DETREE J.¹; COLIN M.¹; CORNEAU H.¹; BOULANOIR H.²;
FARAJI O.Y.²; QUILLARD A.³; KRUG E.¹; COLLET. C.E.¹

¹ Pharmacy Department; ² Geriatrics Department; ³ Medical Information Department;
Flers hospital center, Flers, Normandy, France
Email : collet.charles.edouard@gmail.com

4CPS-039



Background & Objectives

For over 6 months, a geriatric **Multidisciplinary Day Hospitalisation** (MDH) (Onco-geriatric, memory, and fall assessment) has been established at our hospital center. These MDH aim to **optimize patient care** by **reducing medication-related iatrogenesis** among other things.

The objective is to **evaluate the clinical and economic impact of the pharmacist's role** in geriatric MDH.

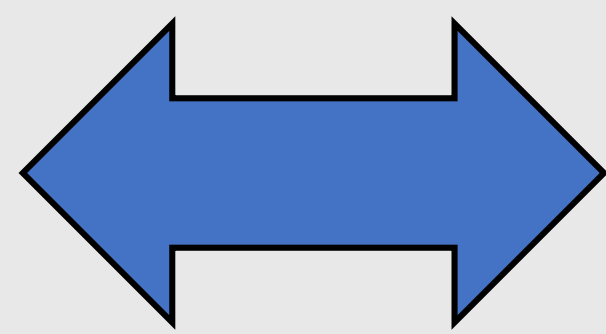
Materials and methods

- ✓ **Monocentric retrospective** study took place from September 1, 2023 to February 29, 2024
- ✓ **Evaluation of pharmaceutical interventions** : CLEO v3 scale (Only the clinical impact)
- ✓ **Economic evaluation of our hospital** : the French fee-for-service pricing of the Medicalization Program for Information Systems

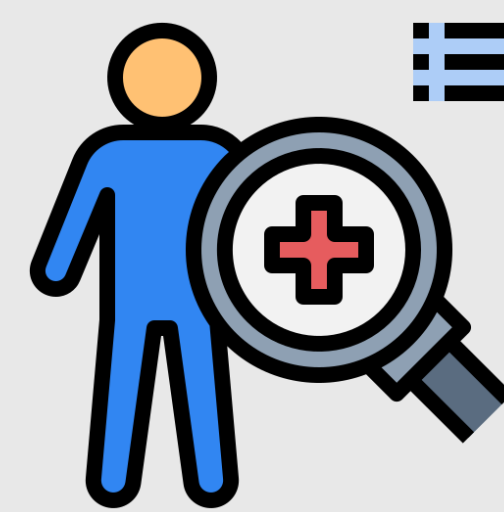
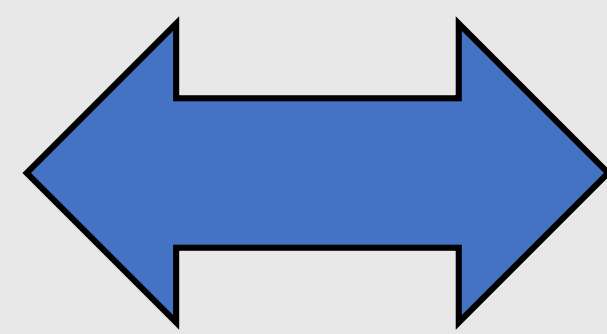
Results



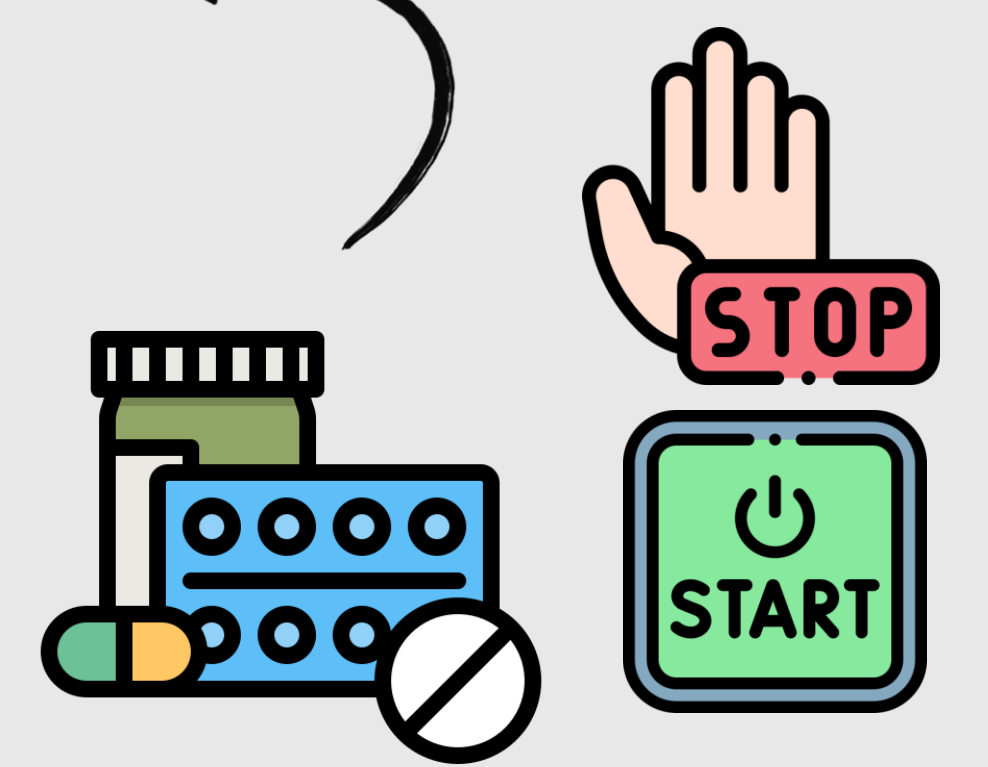
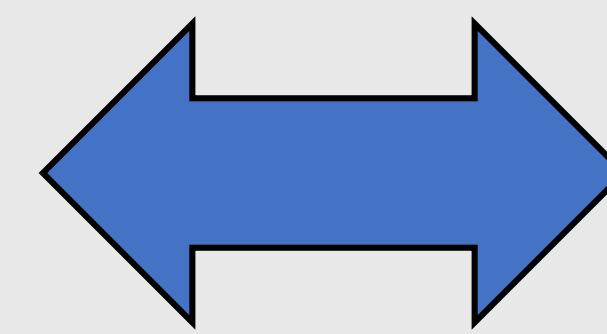
6 months



88 day
hospitalisation



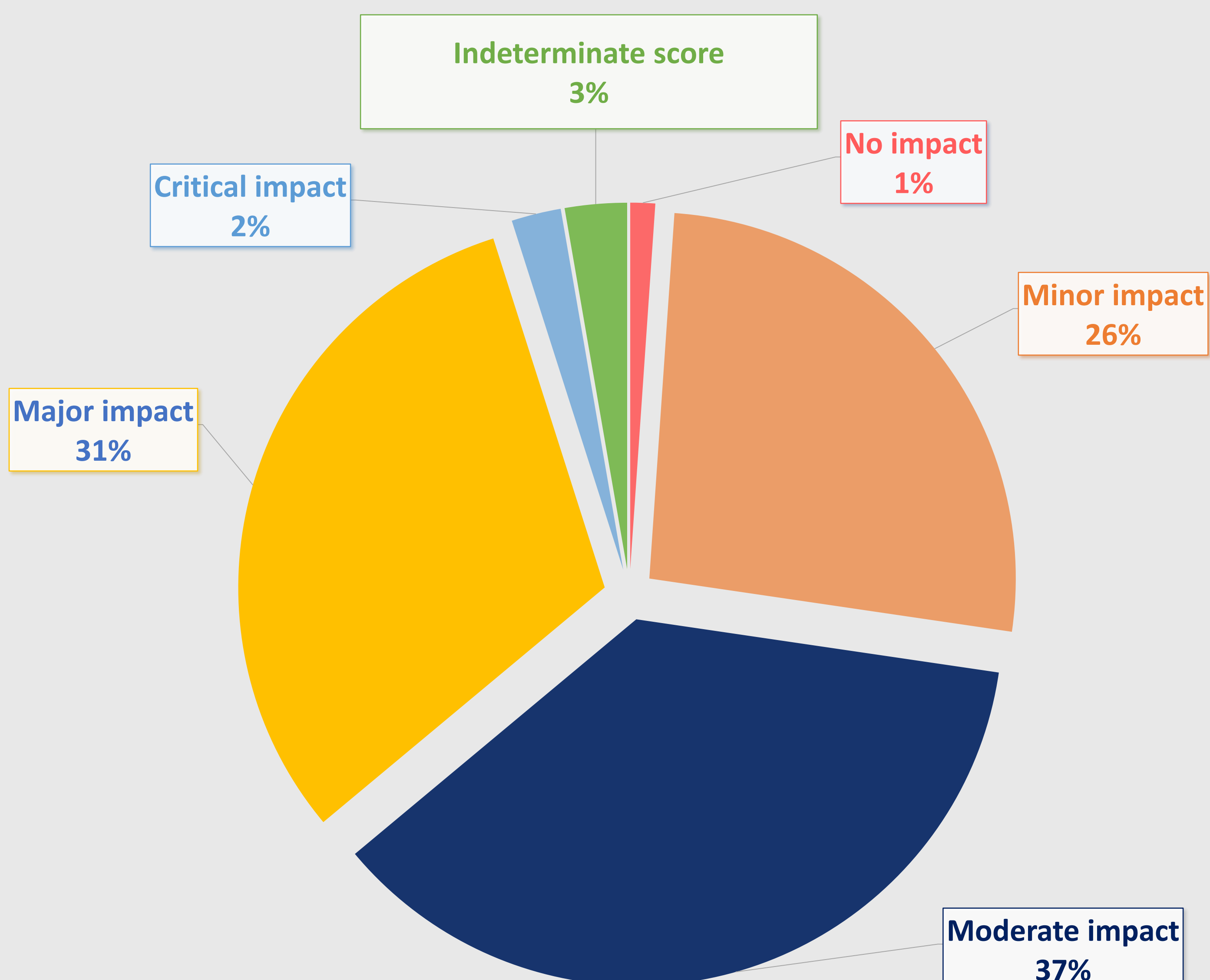
88 patients



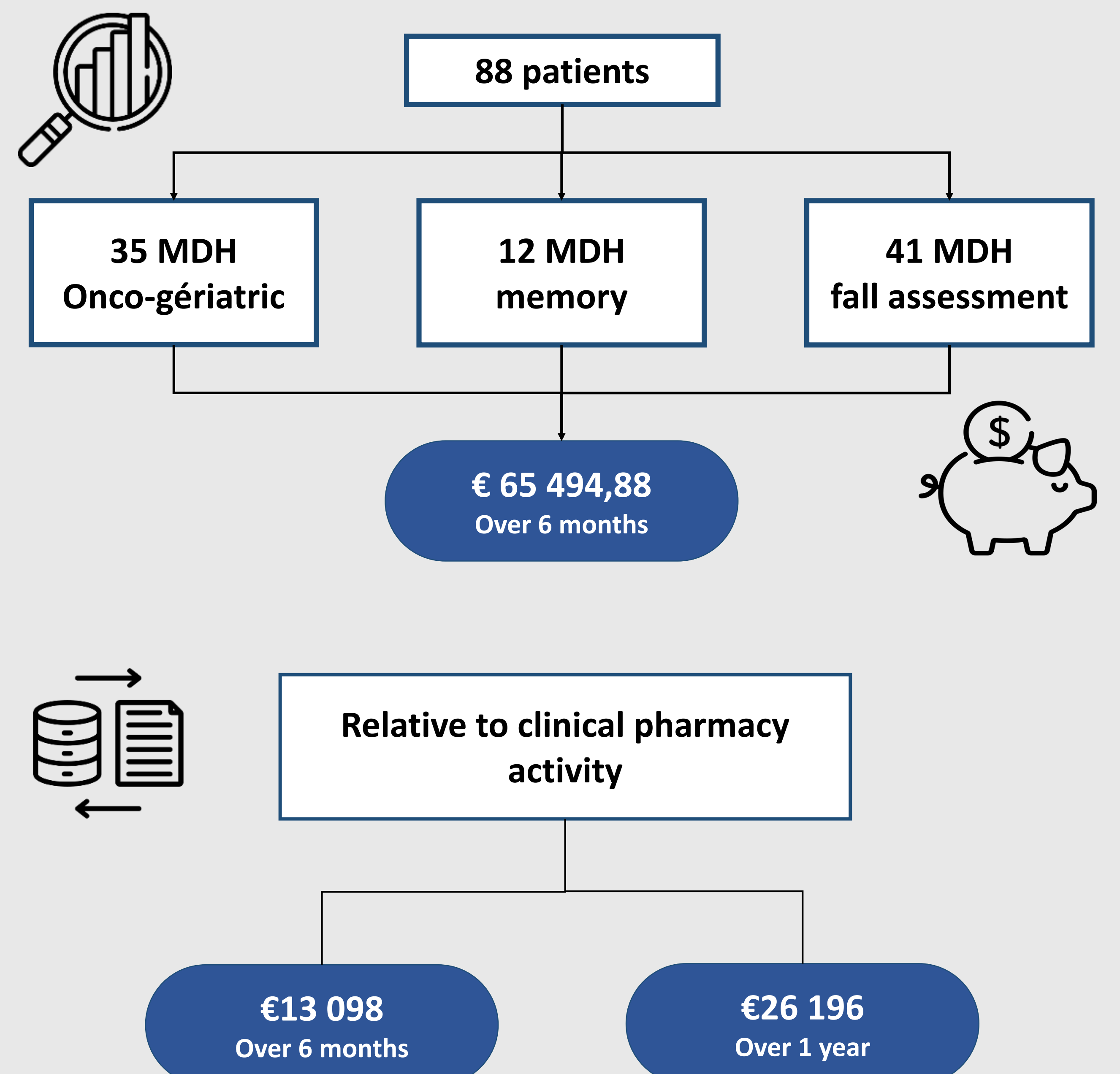
183 pharmaceutical
interventions (PIs)

2,1 pharmaceutical interventions per patient

Evaluation of pharmaceutical interventions



Economic evaluation of our hospital



Conclusion

In total, at least **60 pharmaceutical interventions** contributed to a reduction in medication-related iatrogenesis, **preventing serious side-effects for patients or hospitalization**.

Pharmaceutical presence in MDH has a **positive clinical and economic impact**, strengthening the **safety and optimization of care of elderly patients**. It seems relevant to continue developing MDH in other patient-care pathways.